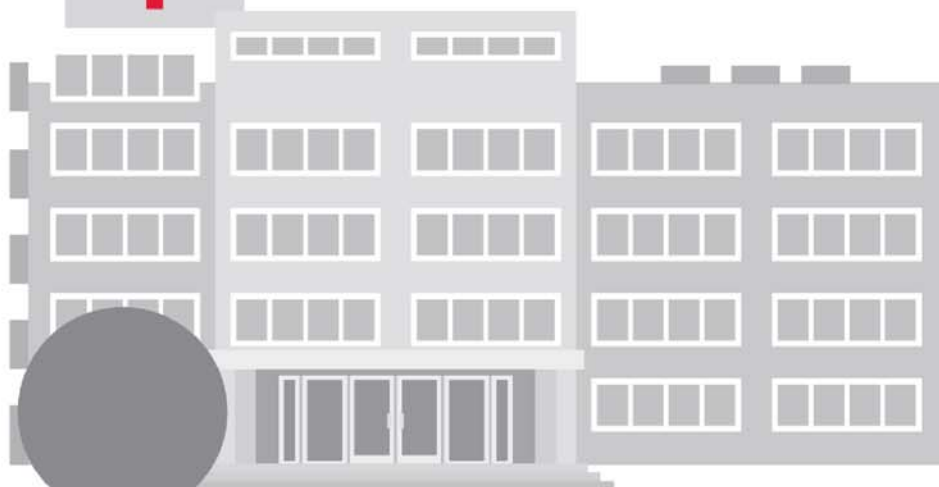




Point of Care 4 | Clinical Mobility 16 | Patient Data Management 26 | Clinical Collaboration 38



PUMPING UP PATIENT SATISFACTION

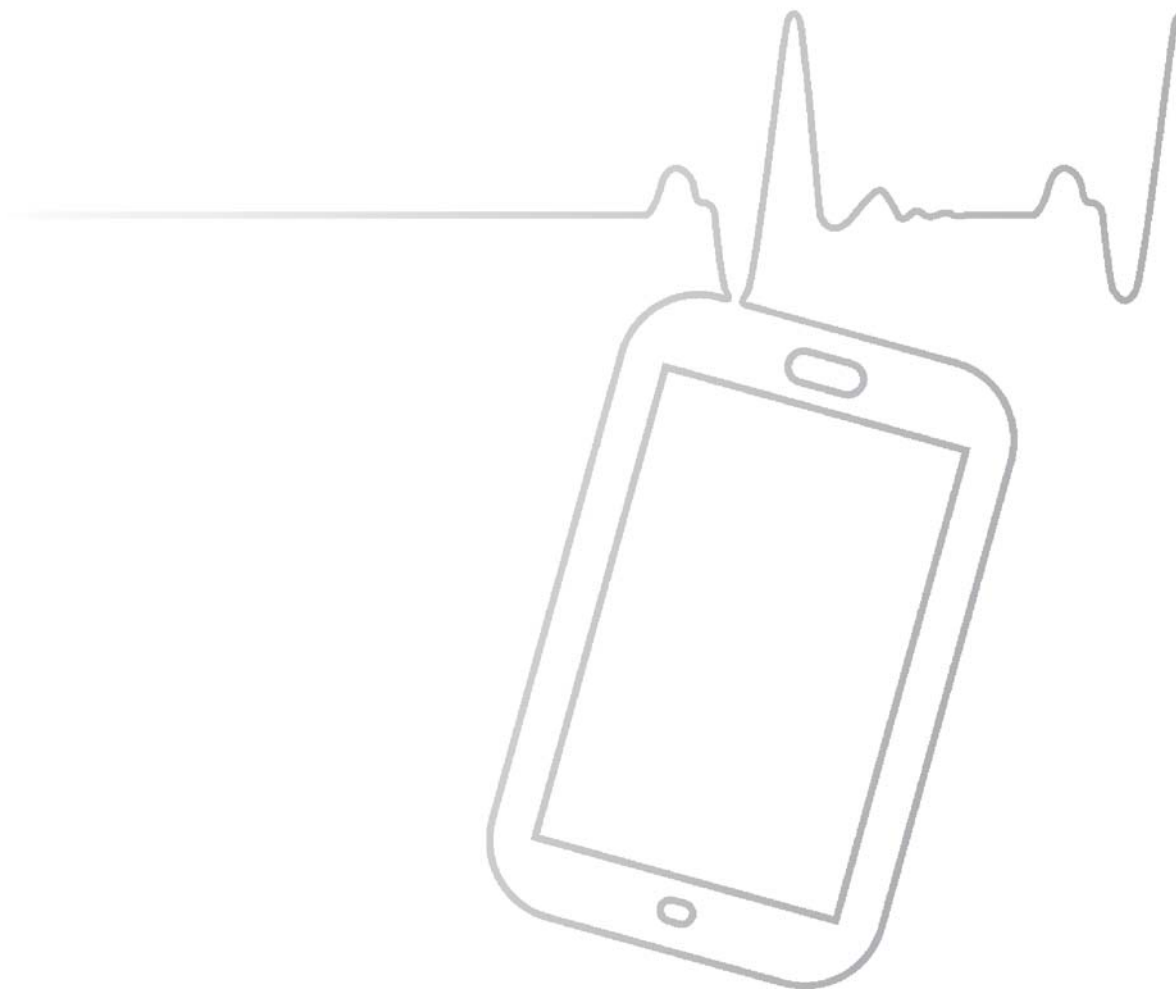
[INFOGRAPHIC
INSIDE:
GETTING ON
TRACK WITH
HCAHPS
PAGE 30]

[H.I.T. TRENDS
HCAHPS AND
THE PATIENT
EXPERIENCE
PAGE 46]



**PEOPLE
WHO
GET IT™**

THE OF TEC



environment often have widely diverging requirements,
even within a single organization. ”²

SOLUTIONS

- 4 Point of Care
- 16 Clinical Mobility
- 26 Patient Data Management
- 38 Clinical Collaboration
- 50 Technology in Practice

**FEATURED
CONTENT**

- 14 Solution Spotlight: Patient Room Technology
- 30 Infographic: Getting on Track With HCAHPS
- 46 H.I.T. Trends: HCAHPS and the Patient Experience
- 58 CDW Services: Point of Care



Get the latest HealthTech Report in digital format at CDW.com/techreport

CURRENT POINT-OF-CARE CHALLENGES

Supporting proliferation of mobile devices on outdated network infrastructures



Maximizing staff time and resource efficiency



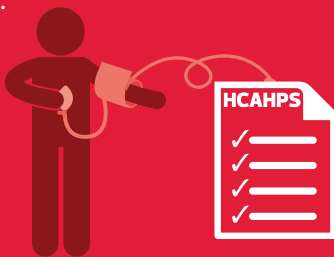
Delivering highest quality of care based on immediate, secure access to patient data



Meeting data security requirements under HITECH/HIPAA and complying with MU Stage 2 requirements



PUMP UP THE EXPERIENCE



Patients are now able to rate hospitals on levels of satisfaction via HCAHPS (Hospital Consumer Assessment of Healthcare Providers and Systems) surveys that tie to Medicare reimbursement.

This means the push to increase patient satisfaction has never been greater. You need to do all you can to make patient stays a positive experience, including investing in technology that provides the Internet, cable, TV and education capability to raise their comfort level and put patients at ease.

TRENDING NOW: BEDSIDE INFOTAINMENT

With the patient experience taking center stage — especially now that Medicare reimbursement is tied to patient satisfaction — patients expect a lot more from their hospitals than a working TV. That's why many hospitals are turning to all-in-one solutions that enable patients to access the Internet, play video games, watch TV and movies on demand, call or video chat with friends and family, learn about their medical conditions, call for help, order meals, and control the lights, room temperature and automated window coverings. Hospitals can even personalize the services they deliver, provide language translation services, or offer revenue-producing pay-for-use services such as online shopping. And when the bedside infotainment technology is integrated with EMRs, PACS and CPOE technology, it transforms into a valuable clinical tool for care providers.



Join the Conversation

Tweet @CDW_Healthcare
#ptexp
#PatientExperience

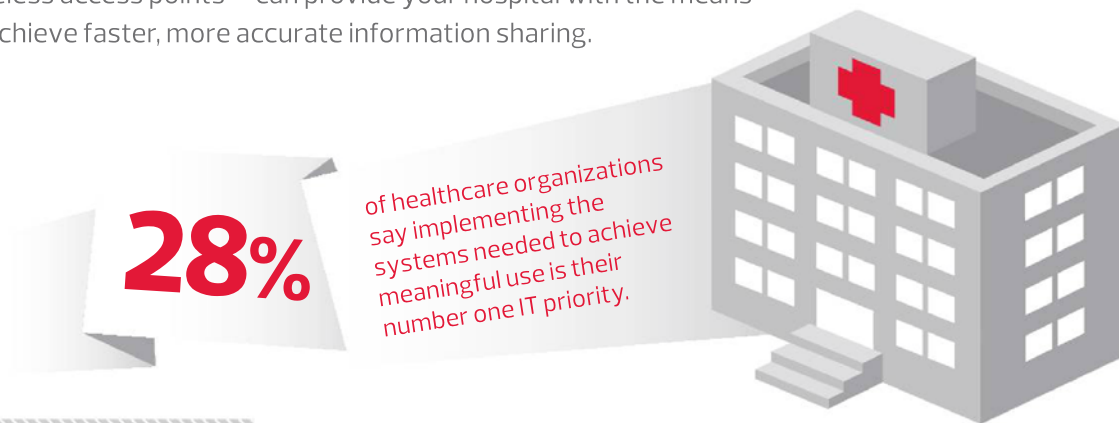
Are you putting mobility to work at the point of care?

LET CDW HEALTHCARE GUIDE YOU...

Through the process of selecting mobility technology at the point of care to help you provide the best care.

POINT OF CARE

With electronic data access becoming the norm at the point of care, technology must support EMR implementation, streamlined workflows and continued data protection. The latest hardware and software – from tablets to barcode scanners to LCD monitors and wireless access points – can provide your hospital with the means to achieve faster, more accurate information sharing.



Source: 2nd Annual HIMSS Leadership Survey



CDW.com/lenovo



Lenovo ThinkPad® Twist

Built for business, designed for flexibility

CDW 2843848

\$845.99

- Ultrabook™
- 3rd generation Intel® Core™ i3-3217U processor (1.80GHz)
- Memory: 4GB RAM
- 320GB hard drive
- 12.5" HD LED backlit multitouch display
- Windows® 8 Pro 64-bit



Lenovo ThinkPad T430s

The right tool for the right task

CDW 2956787

\$1127.99

Lease as low as \$35/mo., see p. 19 for details

- 3rd generation Intel® Core™ i5-3230M processor (2.60GHz)
- WLAN: 802.11a/b/g/n and Bluetooth® 4.0
- Memory: 4GB/500GB hard drive
- 14" LED backlit display with camera
- Windows 8 Pro 64-bit/Windows 7 Pro 64-bit downgrade



CDW.com/rsasecurity

**RSA Archer®**

Discover and investigate advanced threats

CALL FOR PRICING

A governance, risk and compliance (GRC) platform to manage risks, demonstrate compliance and automate business/mission processes. Offers continuous monitoring/risk management, compliance reporting, workflow automation, dashboards, C&A, A&A, assessments, audits, data calls.

- Efficiency – ask a question once and use the results to demonstrate compliance with multiple regulations and frameworks
- Automation – automate workflow, risk-based scoping, data collection, assessment scoring, and findings generation and notifications to reduce administration
- Accountability – assign accountability at all levels of your enterprise hierarchy and infrastructure
- Collaboration – enable users across organizational silos such as IT, finance, operations and legal to collaborate and align using common processes and data
- Visibility – gain a complete view of exposure and gaps across your organization by relating risks and audit findings to objects such as controls, objectives, processes, facilities and technologies to integrate risk management with key business processes



CDW.com/netgear

**NETGEAR® ProSafe® WNDAP360**

Dual-band wireless-N access point

CDW 2442598

\$281.99

- Up to 15x the speed and 10x the coverage of 802.11a, 802.11g networks
- Security features include WPA™, WPA2™, rogue AP detection and 802.1x with RADIUS support
- Integrated Power over Ethernet (IEEE 802.3af PoE) lowers deployment costs
- ProSafe® lifetime warranty on access point, three years on power supply

CDW SERVICES**POINT-OF-CARE**

Security is a growing concern as healthcare organizations struggle to deal with clinicians and staff bringing their own devices into the network.

Whether you want to get a better handle on BYOD management or streamline workflow across your organization, mobile device technology is available to meet your specific needs.

Face these challenges head-on with an end-to-end mobile device solution that can transform the delivery of better patient care – quickly and efficiently.

**Call your CDW Healthcare account manager.
800.500.4239**



CDW.com/symantec

**Symantec™ Mobile Management Suite**

One solution for all your enterprise mobility needs

CDW 2854707

\$88.99

Symantec™ Mobile Management Suite is a comprehensive mobile business enablement solution designed to address a diverse set of enterprise mobility needs. With scalable device management, innovative application management and trusted threat protection technology, it provides all the capabilities needed for enterprises to enable, secure and manage mobile devices, applications and data.

Join the Conversation

CDW.com/view

Thinking about upgrading
your point-of-care
technology?



CDW.com/lenovo

Lenovo ThinkPad® T530

Designed for professionals completing tasks on the go, running between meetings or traveling frequently

CDW 2971294

\$860^{.83}

- 3rd generation Intel® Core™ i5-3230M processor (2.60GHz)
- Memory: 4GB/500GB hard drive
- DVD-writer
- Intel® HD Graphics 4000
- 15.6" HD anti-glare LED backlit display with camera
- Windows® 8 Pro 64-bit / Windows 7 Pro 64-bit downgrade



Lenovo ThinkPad Helix

Defines the next generation of mobile computing through its ground breaking "rip and flip" design

CDW 2932949

\$1397^{.99}

Lease as low as \$43/mo.

See p. 19 for details

- Ultrabook™
- 3rd generation Intel® Core™ i5-3427U processor (1.80GHz)
- Intel® Centrino® Advanced-N 6205s
- Memory: 8GB
- 180GB solid-state drive
- 11.6" HD LED backlit multitouch display
- Windows 8 Pro 64-bit



CDW.com/aruba

Aruba Instant™ IAP-105 Wireless Access Point

Feature-rich, enterprise-grade WLAN deployed in minutes, with no ongoing service fees, additional licenses or additional appliances

CDW 2579016

\$590^{.75}

- Supports AP auto discovery, 802.1X authentication, role- and device-based policy enforcement, rogue detection and adaptive radio management (ARM)
- Multiple Aruba Instant™ networks can be securely and centrally managed by AirWave®, allowing IAP-105 to operate hundreds of remote locations
- For investment protection, IAP-105 can be re-imaged as an 802.11n campus AP and migrate to a centralized mobility controller architecture



CDW.com/ipswitch

Ipswitch™ MOVEit™ — Ad Hoc Transfer

Securely send confidential files right from your email account

50 User License

CALL FOR PRICING

Securely send confidential files right from your email account. This affordable solution helps healthcare companies move confidential patient data between remote offices, such as hospitals, medical clinics, billing and claims agencies, insurance companies and doctors' offices in a secure, accurate, controlled manner.

- Safeguard patient information
- Comply with stringent regulatory requirements
- Increase ease of use
- Improve patient care



CDW.com/hp

HP ProBook 440

A durable design inside and out, with integrated security and a spill-resistant keyboard

CDW 3133454

HP SMART BUY

\$679^{.99}¹

- 4th generation Intel® Core™ i5-4200M processor (2.50GHz)
- WLAN: 802.11b/g/n
- Memory: 4GB/500GB hard drive
- DVD SuperMulti drive
- 14" widescreen LED backlit HD display
- Windows 7 Pro 64-bit / Windows 8 Pro



HP EliteBook Revolve 810

It's an ultra-thin notebook that rotates to become a tablet in an instant

CDW 3205341

HP SMART BUY

\$1339^{.99}¹

Lease as low as \$42/mo.

See p. 19 for details

- 4th generation Intel® Core™ i5-4300U vPro™ processor (1.90GHz)
- Intel® Dual Band Wireless-AC 7260
- Memory: 4GB/128GB solid-state drive
- 11.6" widescreen LED backlit HD display with camera
- Windows 8.1 Pro / 7 Pro 64-bit downgrade





CDW.com/hp



HP EliteDesk 800

WiDi Intel® wireless display lets you connect your EliteDesk to your projectors to display images wirelessly

CDW 3111184

HP SMART BUY

\$728^{.99}

- 4th generation Intel® Core™ i3-4130 processor (3.40GHz)
- Memory: 4GB/500GB hard drive
- DVD SuperMulti drive
- Intel® HD Graphics 4400
- Windows® 8 Pro/Windows 7 Pro 64-bit downgrade



HP Z230 Workstation

Offers workstation-class productivity with advanced memory, graphics and storage

CDW 3111853

HP SMART BUY

\$1036^{.99}

Lease as low as \$33/mo., see p. 19 for details

- 4th generation Intel® Core™ i5-4570 vPro™ processor (3.20GHz)
- Memory: 8GB/500GB hard drive
- Intel® HD Graphics 4600
- Windows 8 Pro/Windows 7 Pro 64-bit downgrade



HP EliteDisplay E231

23" analog/digital/DisplayPort® widescreen LED

CDW 2983437

\$201^{.99}

Outstanding ergonomic adjustability and convenient connectivity in a premier, energy-efficient design.

- Max. resolution: up to 1920x1080
- Contrast ratio: DC 5,000,000:1 (1000:1)
- Panel brightness: 250 cd/m²
- Three-year limited parts and labor warranty



CDW.com/logitech



Logitech® Wireless Wave™ Combo MK550

Comfort Wave Keyboard™ and contoured laser mouse

CDW 2166976

\$63^{.83}

- Gradual wave-shaped, contoured keyboard supports the actual, varied lengths of your fingers
- Laser mouse allows smooth, precise tracking on virtually any surface²
- Advanced 2.4GHz wireless connectivity delivers secure and robust connection



CDW.com/kensington



Kensington® Mouse for Life

Comfort and reliability

CDW 2378216

\$20^{.94}

- Wireless three-button mouse with storable nano receiver
- HD optical sensor (1000 DPI) for responsive control
- Comfortable contoured shape for ambidextrous use
- PC and Mac® compatible.
- Built to last with a limited lifetime warranty



CDW.com/lenovo



Lenovo ThinkVision® LT2252p

22" analog/digital/DisplayPort® widescreen LED

CDW 2944080

\$267^{.99}

For organizations that demand performance, quality and green values.

- Multiple input options for hardware compatibility – VGA, DVI-D™ and DisplayPort
- Max. resolution: up to 1680x1050
- Panel brightness: 250 cd/m²
- Response time: 5ms



CDW.com/nec



NEC MultiSync® EX231W

23" super slim widescreen LED LCD

CDW 2225868

\$238^{.99}

Ultrathin bezel width and depth and lightweight design, puts the focus on the screen versus the cabinet.

- Full connectivity, including DisplayPort and DVI-I inputs and USB pass-through
- Contrast ratio: DC 25,000:1 (1000:1)
- Panel brightness: 250 cd/m²
- Three-year parts and labor warranty, including backlight



CDW.com/lg



LG 23CAV42K-BL

23" zero-client PCoIP Tera2 LED monitor

CDW 2890013

\$439^{.00}

Cost-effective, ultrasecure desktop virtualization.

- Utilizes a Teradici® TERA 2 chipset and VMware® to deliver a powerful and secure virtual computing solution
- Built-in (1Wx2) speakers provide true all in one solution
- Six 2.0 USB input to offer variety usage scene
- Upgraded usability with UPOE ready



CDW.com/hp



HP ProDisplay P221

21.5" analog/digital LED monitor

CDW 2945737

\$175^{.99}

- Max. resolution: up to 1920x1080
- Panel brightness: 250 cd/m²
- Contrast ratio: 3,000,000:1 DC (1000:1)
- Response time: 5ms
- Three-year limited warranty



Combining Clinical Precision with Exceptional Cleanability

Designed with clinical specialists in mind, the Eonis displays combine an innovative, built-in front sensor with Barco's MediCal QAWeb cloud-based tool to ensure superior, controlled image quality. The Eonis 22" model is available in a black and a white version, with the latter offering a fully sealed and cleanable front glass panel to prevent infection – a first in the market.

The Eonis family provides medical and dental specialists with the image quality that Barco is renowned for among radiologists and surgeons around the world. It ensures crisp, bright, high-contrast images, as a solid basis for confident interpretation. Moreover, Barco's Eonis displays offer additional benefits for healthcare IT. With Barco's MediCal QAWeb web-based tool, administrators can remotely manage image policies and access real-time status and budgeting reports of the installed base.





Barco MDRC-2120 2MP Color Display

20.1" clinical review display

CDW 1641382

\$1183.99

Lease as low as \$37/mo., see p. 19 for details

Presents medical images and patient data with more accurate grayscales, better contrast and a wider viewing angle.

- 10-bit DICOM look-up table turns the display into an accurate display monitor for viewing medical images
- Backlight output stabilization (BLOS) ensures fast power-up and continuous LCD backlight stability
- Accurate DICOM-calibration and quality assurance
- Contrast ratio: 800:1



Barco Eonis MDRC-2122 WP 2MP LED

22" dental clinical medical display

CDW 3103643

CALL FOR PRICING

Built with healthcare specialists in mind.

- Ideal for dental offices and clinical review/charting stations where image-enabled EMR is being viewed in close proximity to patients
- Features toughened glass and covered cables, making the display safe to use in a clinical environment
- Comes complete with Barco's cloud-based MediCal QAWeb software, Barco's online service for automated calibration, Quality Assurance and asset management
- Maximum brightness: 250 cd/m²



Dome by NDSsi S3c Dual

21.3" 3MP dual-head color display

CDW 2457019

\$15,500.99

Lease as low as \$484/mo., see p. 19 for details

The Dome S3c display is an all-in-one diagnostic display deployable throughout the hospital enterprise.

- High-bright 3MP color display
- Suitable for grayscale and color images
- RightCheck sensor for remote conformance testing
- Quality image viewing without compromise



Dome by NDSsi E5 Diagnostic Display

21.3" 5MP grayscale display

CDW 2460215

\$21,271.99

Lease as low as \$664/mo., see p. 19 for details

The Dome E5 grayscale display is intended for the most demanding diagnostic applications, including mammography and radiology, in both portrait and landscape modes.

- Supports 10-bit and 8-bit grayscale image data through industry standard interfaces
- Flexible, lightweight, low-power design
- Uncompromised, pristine image quality
- Full DICOM conformance, automatic calibration, and remote monitoring and maintenance

enovate

Enovate™ Emagination Station

Medical cart with different themes

CDW 2992050

\$887^{.99}

Staying in an unknown environment with big medical equipment can be scary for little ones. That's why the carts are designed to engage children and stimulate their senses.

- Gives children a friendly face during recovery
- Creates an atmosphere for a more enjoyable hospital stay



Display, mouse and keyboard sold separately

AVer™

CDW.com/avermedia

AVer™ TabChargeCT

36-device charge cart with a built-in timer

CDW 3126890

\$2039^{.99}

Lease as low as \$64/mo.

See p. 19 for details

A sleek design, combined with enhanced features at a great price makes TabChargeCT the essence of form, function and value.

- Charge and secure 36 Chromebooks, tablets or netbooks
- Avoid circuit overload and pre-set day/time/duration charging with the built-in timer
- Sliding shelves make storing and removing devices effortless
- Rugged steel construction stands up to everyday use while keeping devices safe and secure



ERGOTRON™

CDW.com/ergotron

Ergotron® Telepresence Cart

Dual monitor, powered unit

CDW 3150558

\$4435^{.99}

Lease as low as \$139/mo.

See p. 19 for details

- Combine the power of videoconferencing with the benefits of a StyleView® medical cart
- Expand healthcare access through telepresence with this easy and affordable mobile solution
- Enables remote delivery of specialized care and timely diagnostics



Displays, keyboard and mouse sold separately

Ergotron StyleView® Laptop Cart, LiFe Powered

Lightweight design, fast recharge

CDW 2647828

\$4795^{.99}

Lease as low as \$150/mo.

See p. 19 for details

- Stay productive and on the go with a lithium iron (LiFe) battery
- Ergonomic design for sitting or standing with single-motion fluid adjustment – helps promote caregiver wellness and productivity
- Ultrafast recharge ensures caregiver and cart uptime
- Long battery 'LiFe' minimizes time and cost for maintenance and replacement



Display, keyboard, mouse and contents sold separately

Humanscale

Humanscale T71NNSP1L

Mobile technology cart

CDW 3045958

\$3450^{.00}

Lease as low as \$108/mo.

See p. 19 for details

Built for exceptionally intuitive, one-hand operation.

- Auto Fit™ technology instantly adjusts to each caregiver's entered height
- Power Track™ steering allows for virtually effortless maneuvering and complete user control
- Intuitive, ergonomic operation
- Brilliant simplicity in form and function



Display, mouse and keyboard sold separately

Rubbermaid
Healthcare

CDW.com/rubbermaid

CareLink Fully Featured LCD Mobile Nurse Station

40 AMP AC lithium computer cart

CDW 2965892

\$6866^{.99}

Lease as low as \$215/mo.

See p. 19 for details

Built to save time, easier to move and adapt to your facility's changing needs.

- 7" sealed glass, full-color touchscreen enables improved communication and personal preferences
- Three lighting options, work surface, keyboard and ground, turn on/off all at once or individually, and assist with navigating and working in darkened areas without disrupting patients



Display and keyboard sold separately



CDW.com/fujitsu



Fujitsu fi-7160 Workgroup Scanner

High-speed document scanner

CDW 3196268

\$984.99

- Fast, 60 ppm/120 ipm scanning in color, grayscale and monochrome
- 80-page automatic document feeder (ADF)
- Advanced paper handling technology for better feeding reliability
- LED light-source
- Embossed card scanning (1.4 mm thickness)



CDW.com/canon



Canon imageFORMULA® P-215

USB-powered mobile document scanner

CDW 2539665

\$289.99

- Mfr. speed rating: up to 15 ppm black, 10 ppm color
- Scan resolution: up to 600x600 dpi
- Duty cycle: up to 500 pages per day
- 20-sheet ADF and integrated card reader capable of handling plastic ID cards, embossed cards
- Includes Windows® ISIS/TWAIN drivers and a Mac® TWAIN driver



CDW.com/wasp



Wasp® WWS450H

2D healthcare barcode scanner

CDW 2593777

\$792.99

- Built-in anti-microbial technology provides a level of protection against odor-and-stain causing bacteria
- Read 1D barcodes up to 20" away and 2D barcodes up to 12" away
- Data transfer distance of up to 160' line of sight from base
- Ideal for checking patient and prescription records, scanning packaging and equipment and updating inventory



CDW.com/codecorporation



Code Reader™ 2600

Handheld barcode scanner

CDW 2759750

\$797.99

- High speed, omnidirectional reading of 1D and 2D bar codes
- Lightweight, ergonomic models in palm and handled configurations
- Durable, quick-release rechargeable battery cartridges
- All-inclusive kit includes reader, battery and charging station with embedded Bluetooth® modem with USB charging cable
- Paging button to assist in locating reader (charger station with embedded CodeXML® modem option only)



CDW.com/epson



Epson® TM-T88V

Monochrome receipt printer

CDW 2592353

\$381.99

- Provides reliability, ease-of-use features and dual interfaces
- Print speed: 708.7 inch/min.
- Max. document size: 3.15 in
- Roll (8 cm)



CDW.com/brother

Brother Mobile Solutions, Inc.



Brother® PocketJet® 6 Plus ENGINE 300DP

Mobile, monochrome direct thermal printer

CDW 2881193

\$423.99

- Full-page printing for Apple® iPad® and iPhone® devices only
- Up to 6ppm, at 300dpi resolution
- Prints up to 8.5" wide on cut-sheet or continuous-roll thermal paper
- WLAN (Ad-hoc mode 802.11b/g) interface

HONEYWELL SCANNING MOBILITY

Committed to delivering innovative healthcare solutions designed to improve patient safety, streamline materials management and maximize return on investment.

Our purpose-built bar code scanners and mobile computers incorporate cutting-edge features such as disinfectant-ready housings and FIPS 140-2 wireless encryption. We invite you to work with our healthcare team to develop a solution that meets your healthcare needs.



Honeywell



Stay on top of the latest healthcare IT industry trends and updates. Visit [CDW.com/view](https://www.cdw.com/view)

PATIENT ROOM TECHNOLOGY.

THE CHALLENGES

Being able to more efficiently and effectively deliver care at the patient's bedside is crucial in today's healthcare environment, where having the latest technology assets can act as a differentiator in attracting patients to one hospital over another. Improved technology can also act as a catalyst to aiding clinicians and physicians in providing a higher standard of patient care.

Yet, providing care today is not without its challenges:

- 1 Providing secure access to patient data
- 2 Meeting HIPAA, HITECH and meaningful use security requirements
- 3 Grappling with space constraints and workflow bottlenecks
- 4 Managing outdated wireless infrastructure/bandwidth issues

WHY CDW HEALTHCARE?

CDW Healthcare offers more than 10,000 products from over 1000 manufacturers.

This means healthcare organizations can find the right mix of technology components to meet their unique needs and budgets.

CDW Healthcare can provide the expert guidance to assist any healthcare organization in developing the right patient room technology solution to improve efficiency, enhance patient care and better align with compliance requirements.

As a trusted technology partner to more than 15,000 healthcare organizations for more than 25 years, CDW Healthcare partners with many industry leaders in patient room technology, including:



THE BENEFITS

ENHANCING THE POINT OF CLINICAL INTERACTION

Today's updated technology options at the point of care provide for the access and capture of data electronically in the patient room. In addition, the latest technology enables clinicians to diagnose and treat patients faster and more accurately, thereby reducing the risk of medical errors. The latest technology components play a critical role in helping hospitals and healthcare organizations achieve their PoC goals.

Facilitate medication orders.

Practitioners can place an immediate order with the pharmacy and speed prescription fulfillment

Boost clinician efficiency.

Convenient, real-time data entry and charting at the patient's side

Enhance HIPAA standards compliance.

Improved security allows for safer network access and data protection

Improve quality of patient care.

Faster, uninterrupted access to EMRs, viewing of images, reference data, medication information, etc.

Elevate patient satisfaction.

Increased patient satisfaction at the point of care translates to higher hospital ratings, therefore improved Medicare reimbursement

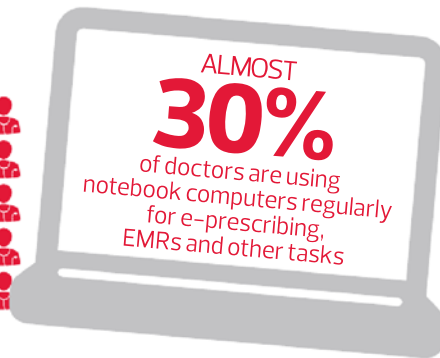
Join the Conversation

Twitter.com/CDW_Healthcare
#ptexp | #PatientExperience

Want to hear what your peers have to say about patient room technology?

CLINICAL MOBILITY

Mobile devices aren't new to healthcare, but multiple factors have brought them to the forefront this past year, and will keep them there as we look to the future. In addition, the number of physicians using mobile devices continues to rise, as does the number of healthcare mobile apps available, as patients and providers embrace mHealth and the growth of mobility.



Source: 2012 National Physicians Survey, June 2012

FUJITSU

CDW.com/fujitsu



Fujitsu LIFEBOOK® S762 PC

Ultraversatile, lightweight, ultraportable notebook

CDW 3063764

\$1002⁻⁴⁸

Lease as low as \$31/mo., see p. 19 for details

- 3rd generation Intel® Core™ i5-3230M processor (2.60GHz)
- Memory: 4GB
- 500GB hard drive
- DVD SuperMulti drive
- 13.3" widescreen, HD display
- Windows® 7 Pro 64-bit



CDW.com/cisco



Cisco® Aironet® 1041 Standalone Access Point

Enterprise-class, entry-level 802.11n access point

CDW 2282141

\$354^{.99}

- Designed to address the wireless connectivity needs of small and medium-sized organizations
- Acts as the connection point between wireless and wired networks or as the center point of a stand-alone wireless network
- Roaming functionality provided by multiple access points enables wireless users to move freely throughout the facility while maintaining uninterrupted access to the network



CDW.com/motion



Motion® F5te Tablet PC

Deliver mobility and reliability

CDW 3155388

\$2686.99

Lease as low as \$83/mo., see p. 19 for details

- Intel® Core™ i3-3227U processor (1.90GHz)
- Intel® Centrino® Advanced-N 6235
- Memory: 2GB/64GB solid-state drive
- 10.4" LED-backlit display with durable Corning® Gorilla® Glass
- Lightweight at 3.3 lbs.
- Enhanced security features include a fingerprint reader and TPM 1.2 Security Chip
- Windows® 8 Pro 32-bit/Windows 7 Pro downgrade



CDW.com/brother

Brother Mobile Solutions, Inc.



Brother® PT-9700

Desktop barcode printer

CDW 2041303

\$333.99

- Prints high-quality, extremely durable laminated thermal transfer labels
- Attractive, small footprint printer design
- Bundled with P-touch® Editor print application design software
- USB 2.0 and RS-232C serial interface connectivity



Honeywell Voyager® 1400g

Handheld barcode scanner

CDW 2750641

\$173.99

- Useful for those with 1D scanning needs today – unit can be upgraded to read PDF417 and 2D bar codes with a simple upgrade license
- Great usability and out-of-box experience increases productivity and end-user satisfaction
- Reliable technology reduces failure rate and increases productivity
- Honeywell ReM and software tools for efficient deployment and management



CDW.com/ergotron

Ergotron® StyleView® Telepresence Cart

Supports displays up to 22"

CDW 3150859

\$2411.99

Lease as low as \$76/mo.

See p. 19 for details

Combines the power of videoconferencing with the benefits of a StyleView® medical cart.

- Enables remote delivery of specialized care and timely diagnostics
- Open architecture allows for the integration of most standard computer and mobile communications equipment
- Auto-locking drawers: Security system stores PINs for up to 10 users to allow electronically controlled access



Keyboard, mouse and display sold separately



CDW.com/lenovo



Lenovo ThinkPad® T430

Performance big enough for your organization

CDW 2853169

\$979.99

- 3rd generation Intel® Core™ i5-3320M processor (2.60GHz)
- Intel® Centrino® Wireless-N 6205
- Memory: 4GB/500GB hard drive
- DVD-writer
- 14" HD anti-glare LED backlit display with camera
- Intel® HD Graphics 4000
- Windows® 8 Pro 64-bit / Windows 7 Pro 64-bit downgrade



CDW.com/microsofthardware



Lenovo ThinkVision® LT2323p

23" analog/digital/DisplayPort®, widescreen LED

CDW 2819268

\$238.99

The slim and elegant design meshes seamlessly with Think product family design and is easy to use.

- Multiple input options for hardware compatibility – VGA, DVI-D™ and DisplayPort
- Max. resolution: up to 1920x1080
- Panel brightness: 250 cd/m²
- Response time: 5ms



Microsoft® Sculpt™ Ergonomic Mouse

Work comfortably all day long

CDW 3102584

\$54.99

- Advanced ergonomic design
- Thumb scoop
- Windows button
- Back button
- Four-way scrolling



CDW.com/targus



Targus® UltraThin Corporate Traveler Case

Fits up to 14" widescreen notebooks

CDW 1185972

\$79.99

- Slim design for the style-conscious minimalist who likes to travel light
- Comprehensive workspace with various compartments
- Features patented SafePORT® Air Cushion System to help prevent drop damage
- Padded ergonomic shoulder strap with nonslip coating for added comfort

CDW TERMS AND CONDITIONS OF PRODUCT SALES

THE TERMS AND CONDITIONS OF PRODUCT SALES ARE LIMITED TO THOSE CONTAINED ON CDW'S WEBSITE AT CDW.COM. NOTICE OF OBJECTION TO AND REJECTION OF ANY ADDITIONAL OR DIFFERENT TERMS IN ANY FORM DELIVERED BY CUSTOMER IS HEREBY GIVEN.

Leasing Information

Leasing is provided by CDW's Premier Leasing Partners: Cisco Capital, HP Financial Services, IBM Global Finance, Lenovo Financial Services, Netapp Financing and VAR Resources and is subject to its terms, conditions and policies. Monthly lease payments are based on a 36-month, Fair Market Value purchase option lease, subject to equipment and credit qualification. Leases are only available to commercial customers. All applicable taxes and shipping costs will be included in the monthly payment amount. Visit CDW.com/leasing or call a leasing specialist at 800.800.4239 for details.

Trademarks

CDW®, CDW-G® and The Right Technology. Right Away.® are registered trademarks of CDW LLC. PEOPLE WHO GET IT™ is a trademark of CDW LLC. All other trademarks and registered trademarks are the sole property of their respective owners.

Intel Trademark Acknowledgement

Ultrabook, Celeron, Celeron Inside, Core Inside, Intel, Intel Logo, Intel Atom, Intel Atom Inside, Intel Core, Intel Inside, Intel Inside Logo, Intel vPro, Itanium, Itanium Inside, Pentium, Pentium Inside, vPro Inside, Xeon, and Xeon Inside are trademarks of Intel Corporation in the U.S. and/or other countries.

AMD Trademark Acknowledgement

AMD, the AMD Arrow, AMD Opteron, AMD Phenom, AMD Athlon, AMD Turion, AMD Sempron, AMD Geode, Cool 'n' Quiet and PowerNow! and combination are trademarks of Advanced Micro Devices, Inc.

HP Smart Buy

HP Smart Buy savings reflected in advertised price. HP Smart Buy savings is based on a comparison of the HP Smart Buy price versus the standard list price of an identical product. Savings may vary based on channel and/or direct standard pricing.

Telephone Sales

Monday through Friday, 7:00 a.m. to 7:30 p.m.

Support Numbers

Technical Support Toll-free: 800.383.4239

Customer Relations (including RMA)

Toll-free: 866.782.4239 or CustomerRelations@cdw.com

The articles contained in this publication represent the views of the authors and not those of the publisher.

©2014 CDW LLC. All rights reserved.

CDW Quality Policy

Together We Strive For Perfection



CDW.com/fujitsu

Fujitsu Express Buy LIFEBOOK® T734 Tablet PC

12.5" mainstream convertible tablet PC — pen and multitouch input with enhanced performance

CDW 3210388

\$1513^{.20}

Lease as low as \$47/mo.

See left for details

- 4th generation Intel® Core™ i5–4300M vPro™ processor (3.30GHz)
- Memory: 8GB
- 500GB hard drive
- DVD±RW drive
- 12.5" LED backlit display with integrated camera
- HD Graphics 4600
- Windows® 8 Pro 64-bit / Windows 7 Pro 64-bit downgrade



Clinical Mobility



CDW.com/lenovo

Lenovo ThinkPad® X230 Tablet

Ultramobile, IT intelligent

CDW 2754086

\$1446^{.99}

Lease as low as \$45/mo.

See left for details

- 3rd generation Intel® Core™ i5–3320M vPro™ processor (2.60GHz)
- 3G capability
- Intel® Centrino® Advanced–N 6205
- Memory: 4GB/500GB HD
- 12.5" LED backlit display with web camera
- Windows 7 Pro 64-bit



CDW.com/hp

HP EliteBook Revolve 810

An ultrathin, full-performance notebook that transforms into a tablet

CDW 2957133

HP SMART BUY

\$1469^{.99}

Lease as low as \$46/mo.

See left for details

- 3rd generation Intel® Core™ i5–3437U vPro™ processor (1.90GHz)
- WLAN: 802.11a/b/g/n + Bluetooth® 4.0
- Intel® Centrino® Advanced–N 6235
- Memory: 4GB/128GB solid-state drive
- 11.6" widescreen LED backlit HD display with camera
- Windows 8 Pro / Windows 7 Pro 64-bit downgrade





The Security Division of EMC

RSA Security® Analytics

Discover and investigate advanced threats

CALL FOR PRICING

Provides enterprisewide visibility into network traffic and log event data to reduce attacker time from weeks to hours.

System includes APTs, external threats, malware, breach, SIEM, log management, network visibility, deep packet inspection, beaconing, compliance reporting.

Security Analytics combines Big Data security collection, management and analytics; full network and log-based visibility; and automated threat intelligence – enabling security analysts to better detect, investigate and understand threats they often could not easily see or understand before.

- Provides a single platform for capturing and analyzing large amounts of network, log and other data
- Accelerates security investigations by enabling analysts to pivot through terabytes of metadata, log data and recreated network sessions with just a few clicks
- Archives and analyzes long-term security data through a distributed computing architecture. Provides built-in compliance reports covering a multitude of regulatory regimes



CDW.com/cisco



Cisco® ASA 5505 Security Plus Bundle

A high-performance, comprehensive security solution

CDW 1058199

\$1086^{.99}

Lease as low as \$34/mo., see p. 19 for details

This easy-to-use solution lets you control access to network resources to protect data and maximize network uptime.

- Staff productivity is increased by controlling file sharing, instant messaging, spam, phishing and other emerging threats
- IT resources are freed from virus eradication and system cleanup activities



Cisco ASA 5510 Adaptive Security Appliance

A key component of the Cisco SecureX Architecture™

CDW 792590

\$3036^{.99}

Lease as low as \$95/mo., see p. 19 for details

- The Cisco® ASA 5500 series integrates a strong firewall with a robust suite of highly integrated, security services for networks of all sizes – small and midsize business with one or a few locations, large enterprises, service providers and mission-critical data centers
- The Cisco ASA 5500 series delivers multiscale performance and functionality with dependable services flexibility, modular scalability, feature extensibility and lower deployment and operations costs



CDW.com/trendmicro



Trend Micro™ Deep Security 9

Comprehensive security platform for physical, virtual and cloud servers

CALL FOR PRICING

Trend Micro™ Deep Security provides a comprehensive server security platform designed to simplify security operations while accelerating the ROI of virtualization and cloud projects.

- Virtualization security – gets even better with security improvements so that it can scan performance and platform support, as well as hypervisor integrity monitoring
- Cloud security – allows organizations to extend their data center security to the public cloud, with integration into VMware vCloud™ Director and Amazon web services
- Security-as-a-Service for cloud service providers – has a multitenant, elastic, self-service-capable architecture that enables XSPs to differentiate their cloud offerings by providing comprehensive security



CDW.com/mcafee



McAfee® Total Protection for Data Loss Prevention

Protect data leaks, stay ahead of threats, deploy and manage with ease

101-250 user license With one-year Gold Support¹

CDW 1211004

\$59.99

- Safeguards intellectual property and ensures compliance by protecting sensitive data wherever it lives – on the network, in storage systems or at the endpoint
- Delivers the highest levels of protection for sensitive data, while saving time and money with centralized deployment, management and reporting
- With the latest McAfee DLP 9.2 release, protection can be delivered via either low maintenance hardware appliances or VMware® compatible virtual appliances



CDW.com/kaspersky



**FREE TRIAL
AVAILABLE** ↓

Visit CDW.com/kaspersky for more details; web demo available, call your Account Manager today to schedule

Kaspersky® Security for Virtualization

Maximize your ROI on your virtualized environment with an agentless solution

100-149 user subscription license With one-year maintenance²

CDW 2619329

\$79.99

- New virtual machines are automatically provided with anti-malware protection
- Unified management console for physical machines, virtual machines and mobile devices
- Elimination of duplicate signature databases, "scan" and "update" storms and instant-on gap



CDW.com/websense



WebSense® TRITON® Security Gateway Anywhere

Web and email security solution with built-in DLP

CALL FOR PRICING

As with all TRITON solutions, you receive:

- Unified architecture
- Unified security intelligence
- Unified policy and reporting

Web Security Gateway Anywhere

- TruHybrid™ deployment
- TruWeb DLP™ capability
- Gateway threat analysis

Email Security Gateway Anywhere

- TruHybrid deployment
- TruEmail DLP™ capability
- URL sandboxing

¹Licensing requires a minimum purchase of 11 licenses; includes one-year Gold Support (24/7 technical support, upgrade protection and virus definition updates)

²Maintenance includes new release and virus definition updates, technical support via phone, 8 a.m. – 9 p.m. EST and 24/7 web support



CDW.com/hp



HP EliteBook 850

Embedded security, built-in peace of mind

CDW 3133623

HP SMART BUY

\$1149^{.99}

Lease as low as \$36/mo., see p. 19 for details

The 4th generation Intel® Core™ vPro™ processor is designed to strengthen security across the organization.

- 4th generation Intel® Core™ i5-4300U vPro™ processor (1.90GHz)
- Intel® Dual Band Wireless-N 7260AN
- Memory: 4GB/500GB hard drive
- 15.6" HD SVA display with camera
- Intel® HD Graphics 4400
- Windows® 8 Pro/Windows 7 Pro 64-bit downgrade



CDW.com/lenovo



Lenovo ThinkPad® Edge E531

Powerful performance, exceptional value

CDW 3016945

\$594^{.99}

- 3rd generation Intel® Core™ i3-3120M processor (2.50GHz)
- Intel® HD Graphics 4000
- 4GB RAM/320GB hard drive
- DVD-writer
- 15.6" LED backlit display with camera
- Windows 8 Pro 64-bit/Windows 7 Pro 64-bit downgrade

PROTECT YOUR INVESTMENT



CDW HEALTHCARE HELPS YOU STREAMLINE YOUR COMMUNICATIONS

Conferencing and Video

In today's environment where telecommunication is becoming more popular, conferencing and video solutions help your organization stay in the game.

Contact Center Management

With trusted contact center solutions from CDW, your organization will be able to provide seamless customer service by quickly providing answers and assistance.

Collaboration

We can implement a seamless, sophisticated solution system that encourages collaboration by way of email, social media, instant messaging, and more.

Call your CDW Healthcare account manager.

800.500.4239



CDW.com/dlink



D-Link® AirPremier® N Simultaneous Dual Band PoE Access Point (DAP-2690)

Deploy reliable 802.11n wireless LAN

CDW 2201280

\$397^{.99}

- Deploy a highly manageable and extremely robust simultaneous dual band wireless network
- All four antennas are detachable and can provide optimal wireless coverage in both 2.4GHz (802.11g and 802.11n) and 5GHz (802.11a and 802.11n) bands
- Maximum wireless signal rates of up to 300Mbps in both the 2.4GHz and 5GHz wireless band
- Supports both personal and enterprise versions of WPA™ and WPA2™ (802.11i) with support for RADIUS server backend

ENTER
LENOVO



The Think brand is world-renowned for its security as well as reliability, durability, mobility and manageability. Lenovo has a full suite of products for your healthcare facilities. From affordable notebooks to innovative tablets for the on-the-go Healthcare Professional.

iPad mini with Retina display



iPad® mini has a stunning 7.9-inch Retina® display with over 3.1 million pixels. It also comes with the A7 chip with 64-bit architecture, ultrafast wireless, iSight® and FaceTime® HD cameras, powerful apps, and up to 10 hours of battery life.¹ Yet it still fits easily in one hand.



CDW.com/samsung



Samsung® ATIV Smart PC Pro 700T Tablet

Switch between your hands and the revolutionary S Pen™ to write or type emails, send meeting reports, presentations

CDW 2853792

\$1299.99

Lease as low as \$41/mo., see p. 19 for details

- 3rd generation Intel® Core™ i5-3317U processor (1.70GHz)
- Memory: 4GB/128 solid-state drive
- 11.6" LED Full HD
- Full HD outdoor viewable display
- Intel® 802.11 a/b/g/n with wireless display support
- Windows® 8 Pro 64-bit



CDW.com/fujitsu



Fujitsu STYLISTIC® Q704 Hybrid Tablet PC

Ultraversatile, lightweight, ultraportable, ideal for professionals on the go

CDW 3221839

\$1499.00

Lease as low as \$47/mo., see p. 19 for details

- 4th generation Intel® Core™ i5 4200U processor (2.60GHz)
- 4GB/128GB solid-state drive
- 12.5" LED backlight display with camera
- Intel® HD Graphics 4000
- Windows 7 Pro 64-bit/8.1 Pro



CDW honors and supports AT&T Mobility National Business Contract offers and discounts

AT&T Mobility Solutions

CALL YOUR CDW MOBILE WIRELESS SPECIALIST FOR ACTIVATION, PRICING AND SUPPORT

Mobility is transforming the way we work. Advances in wireless technology and smart devices are enabling organizations of every size to compress information latency and turn location-specific knowledge into an operational advantage. When enabled by affordable and reliable mobile solutions, organizations can improve performance in cost control, speed and process quality.



CDW honors and supports Sprint Mobility National Business Contract offers and discounts

Sprint Wireless Mobility Solutions

CALL YOUR CDW MOBILE WIRELESS SPECIALIST FOR ACTIVATION, PRICING AND SUPPORT

Sprint mobility solutions integrate wireless into your enterprise communications, allowing complete productivity, tighter cost control and greater call redundancy and coverage. Your staff will be accessible and efficient, since their desk calls can be routed to their mobile phones, and you'll lower costs by reducing PRIs, minimizing trunks and eliminating desks for the highly mobile.

PATIENT DATA MANAGEMENT

In today's digital healthcare environment, maintaining uptime is critical. A robust data storage solution can help you maintain uptime, manage and anticipate rapid data growth from EMRs, and help you achieve seamless backup, recovery and archiving to comply with HIPAA and state mandates for retaining patient data.



Source: IBM.com



CDW.com/hp



Hard drives sold separately

HP ProLiant DL380p Gen8 Server

Outstanding performance and enhanced configuration flexibility

Two Eight-Core Intel® Xeon® E5-2660 processors (2.20GHz)

CDW 2637258

HP SMART BUY

\$5569.⁹⁹

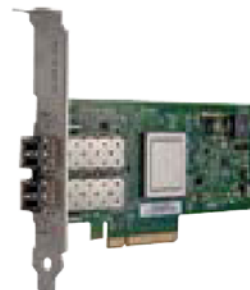
Lease as low as \$173/mo., see p. 19 for details

The HP ProLiant DL380p Gen8 Server series has designed-in quality and serviceability, increased performance, enhanced configuration flexibility and customer-inspired design. Up to two Intel® Xeon® E5-2600 family processors offer even more powerful performance.

- Memory: 32GB std., 768GB max. (PC3L-10600R DDR3)
- Hard drive: none ship std.; up to 16 hot-pluggable SFF SAS/SATA drive bays available, 16TB max. storage
- 20MB Level 3 Cache
- HP Ethernet 1Gb 4-port 331FLR Adapter



CDW.com/qlogic



QLogic® 3200 Series

10Gbps Ethernet-to-PCIe® intelligent Ethernet adapters

Dual-port with RJ45 connectors

CDW 1426784

\$1336.⁹⁹

Lease as low as \$42/mo., see p. 19 for details

- Ideal for high-bandwidth applications, as well as applications that require network scaling
- Dual-port, line-rate 10Gbe throughput, approaching 40Gbps bidirectional
- Advanced virtualization with NIC partitioning (NPAR)
- VLAN, teaming, jumbo frame and stateless offload support

QLogic® FlexSuite 2600 Series

CDW 2868059

\$1824.⁹⁹



CDW.com/hp



HP Compaq Elite 8300

Built and engineered for security, ready for the future

CDW 3007616

HP SMART BUY

\$699.99¹

- 3rd generation Intel® Core™ i5-3470 vPro™ processor (3.20GHz)
- Memory: 8GB/1TB hard drive
- DVD SuperMulti drive
- Intel® HD Graphics 2500
- Windows® 7 Pro 64-bit



HP Z230 Workstation

Powerful processor, graphics technologies and scalability to match your organization's needs

CDW 3111816

HP SMART BUY

\$1259.99¹

Lease as low as \$40/mo., see p. 19 for details

- 4th generation Intel® Core™ i7-4770 vPro™ processor (3.40GHz)
- Memory: 8GB/1TB hard drive
- Intel® HD Graphics 4600
- Windows 8 Pro/Windows 7 Pro 64-bit downgrade



CDW.com/kodak



Kodak i4200 Scanner

Production document scanner

CDW 2022680

\$7103.99

Lease as low as \$220/mo., see p. 19 for details

- Mfr. speed rating: up to 100 pages per minute
- Scan resolution: up to 600 dpi, optical
- Duty cycle: up to 30,000 pages per day
- Maintains full rated speed with valuable features like Auto Orientation, Auto Crop, and Skew Detection enabled
- Output to multiple file formats and destinations, and scan to other applications



CDW.com/adobe



Adobe® Acrobat® XI Pro

A complete solution for working with PDF documents and forms

AVL CLP Level 1 Full license²

Multiple platforms

CDW 2821660

\$416.99

- Increase productivity and reduce costs
- Strengthened security and support for deployment automation tools help safeguard your IT environment
- Allows you to invest in performing your mission, not managing software updates
- Helps eliminate paper forms
- Protects electronic documents virtually anywhere they go
- Easily prepares files that follow your document policies with Actions



Check Point
SOFTWARE TECHNOLOGIES LTD.

CDW.com/checkpoint



Software solution-based architecture

Check Point® 600 Appliance

Wireless security for small business

CALL FOR PRICING

- Secured connectivity from remote devices to the business
- Ethernet, ADSL and 3G Internet access connectivity
- Local wireless access (802.11a/b/g/n) with secured guest access



CDW.com/ibm



Hard drives sold separately



IBM® System x3550 M4 Rack-mount Server

Excellent price, performance and density

Quad-Core Intel® Xeon® E5-2609 processor (2.4GHz)

IBM EXPRESS MODEL

CDW 2643832

\$2235.99¹

Lease as low as \$70/mo., see p. 19 for details

The new IBM® System x3550 M4 blends outstanding uptime, performance and I/O flexibility with cost efficiency and rock-solid reliability. With more computing power per watt, support for the latest Intel® Xeon® E5-2600 series processors and advanced memory support, the x3550 M4 offers excellent performance and density.

- Memory: 4GB std., 768GB max.
- Hard drive: none ship std.; up to eight 2.5" hot-swappable SAS/SATA drive bays or three 3.5" hot-swappable SAS/SATA drive bays, 9TB max. storage
- 10MB Level 3 Cache
- Integrated Quad Gigabit Ethernet

IBM Hot-Swap Hard Drive for BladeCenter® HS23

Optimize storage and data management with effectiveness

2.5" (SFF), 10,000 RPM, SAS 6Gbps

300GB CDW 2644291

\$349.99

- Outstanding reliability that enables operation in RAID environments
- Strong application performance and availability

2.5" (SFF), 7,200 RPM, NL SATA 6Gbps

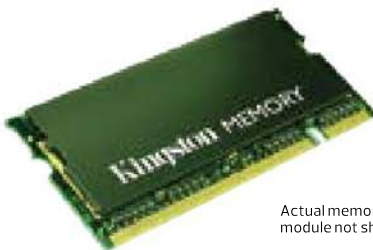
1TB CDW 2588508

\$669.99

- Provides a wider selection of choices to satisfy a range of applications
- High-performing SATA option



CDW.com/kingston



Actual memory module not shown

Kingston® Server Memory Upgrades

For IBM x3550 M4 servers

4GB CDW 1737622

8GB CDW 1754093

CALL FOR PRICING

System-specific memory for more than 6000 desktops, notebooks and servers.

- 100% individually tested modules
- DDR3 1066MHz
- Lifetime warranty



CDW.com/vmware



VMware vCloud® Suite 5.5

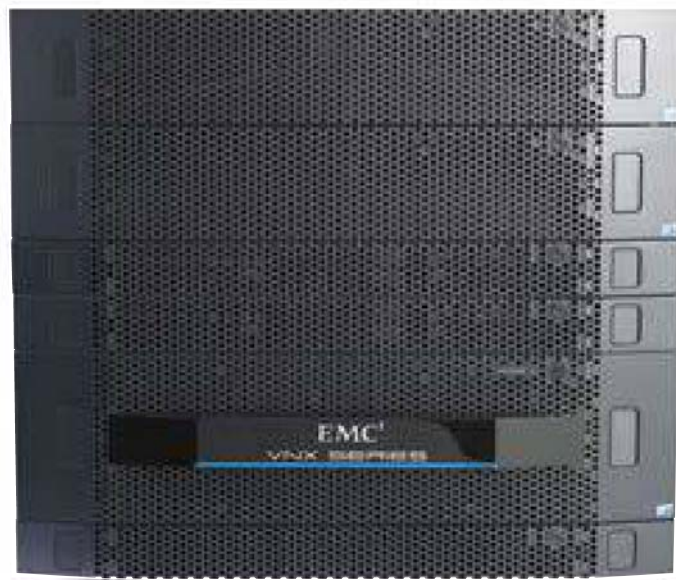
CALL FOR PRICING

The new vCloud® Suite helps you build and operate a vSphere-based private cloud enabling you to deliver IT service through policy-driven automation. Your data center can now deliver cloud service provider economics at scale, where applications can be provisioned in minutes, with the right level of security and availability.

Suite 5.5 comprises the following integrated products:

- VMware vSphere®
- VMware vCenter™ Site Recovery Manager™
- VMware vCloud Networking and Security™
- VMware vCloud Automation Center™
- VMware vCenter Operations Management Suite™
- VMware vCloud Director™

SIMPLE, EFFICIENT, POWERFUL



EMC® VNX5600™ UNIFIED STORAGE PLATFORM

- » Scalable, easy-to-use solution for multiprotocol file and block data services
- » Centralized management makes administration simple
- » Data efficiency services reduce your capacity requirements up to 50 percent
- » Optimize for virtual applications with VMware® and Hyper-V® integration
- » Flash optimization delivers high levels of transactional performance with increased bandwidth and low latency
- » Architected for high availability in mission-critical business environments

CDW 3097207
CALL FOR PRICING

EMC²

GETTING ON TRACK

TO DRIVE **INCREASED**
PATIENT SATISFACTION

PATIENT EXPERIENCE RANKS HIGH:

84%

OF HEALTH LEADERS RANK
PATIENT EXPERIENCE AMONG
THEIR **TOP THREE PRIORITIES**¹



52%

OF ORGANIZATIONS INCLUDE SHARING PATIENT
SATISFACTION, ACTION AND EXPERIENCE STORIES
AS A KEY COMPONENT OF PATIENT EXPERIENCE²

TOP 3 PRIORITIES FOR THE NEXT 3 YEARS²

1. PATIENT EXPERIENCE / SATISFACTION
2. QUALITY / PATIENT SAFETY
3. COST MANAGEMENT / REDUCTION

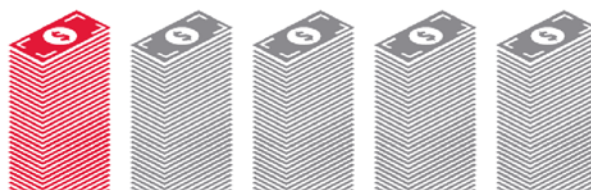
BUT ADOPTION IS STILL LAGGING:



58%

OF HEALTHCARE ORGANIZATIONS
HAVE NOT MADE INVESTMENTS
SPECIFICALLY RELATED TO IMPROVING
THE PATIENT EXPERIENCE³

ONLY ONE IN FIVE OF THOSE WHO
LINK PHYSICIAN COMPENSATION
WITH PATIENT EXPERIENCE PROVIDE
AN INCENTIVE GREATER THAN 5%¹



WITH HCAHPS

CDW.com/communit



CDW.com/view

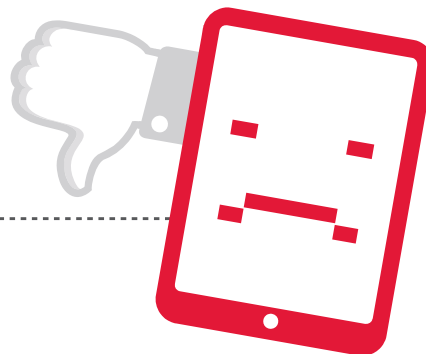


@CDW_Healthcare



TECHNOLOGY PLAYS A KEY ROLE:

**LACK OF TECHNOLOGY INSIDE
A PATIENT ROOM CAN BE A REAL
FRUSTRATION POINT FOR PATIENTS⁴**



TOP TECHNOLOGY
RECOMMENDATION TO
IMPROVE PATIENT EXPERIENCE:
BEDSIDE-INTERACTIVE COMPUTERS⁵

INFORMATION TECHNOLOGY:

- ✓ PLAYS A KEY ROLE IN PROVIDING THE DATA USED IN PATIENT SATISFACTION MEASUREMENT AND FEEDBACK⁶
- ✓ ENABLES CLINICIANS TO DELIVER IMPROVED PATIENT CARE
- ✓ STREAMLINES COMMUNICATIONS AND IMPROVES STAFF EFFICIENCY
- ✓ EMPOWERS CAREGIVERS WITH INFORMATION AT THE POINT OF CARE



ARE YOU ON TRACK?

**THE DEMAND FOR INCREASED PATIENT
SATISFACTION WILL ONLY GROW IN 2014.**

Are you proactively tackling this trend?

For more information on technology that can help,
contact CDW Healthcare today.

CDW.com/communit | CDW.com/view | @CDW_Healthcare





Software solution-based architecture

Imprivata® OneSign® Authentication Management

Identity and password proliferation under control

CALL FOR PRICING

Imprivata® OneSign® Authentication Management simplifies and secures access to physical and virtual desktops. User names and passwords are replaced with the tap of a badge or swipe of a fingerprint. Combine authentication management with single sign-on to enable No Click Access™ to desktops and applications.

- Provides scalable and high-performance authentication management, whether providers are accessing the network locally or via VPN, or even working offline
- Access is managed centrally without requiring changes to user directories
- Extensive out-of-the-box compliance reporting, you can easily meet compliance by showing a record of who accessed what – and when, where and how access happened



CDW.com/symantec



Symantec™ Enterprise Solution

Provides multiple layers of protection to deliver strong data security

CDW 3208608

\$71.99

Symantec™ Enterprise Solution removes complexity by combining products to provide layers of protection for your mobile, endpoint, and mail/web infrastructure. It protects against malware and data loss with endpoint security, drive encryption, and system recovery, while endpoint management enables patching of applications. Predictable subscription pricing and centralized control of your Windows®, Mac OS® X, and Linux® environments helps reduce ongoing costs.



CDW.com/mcafee



McAfee® Next-Generation Firewall – Powered by Stonesoft

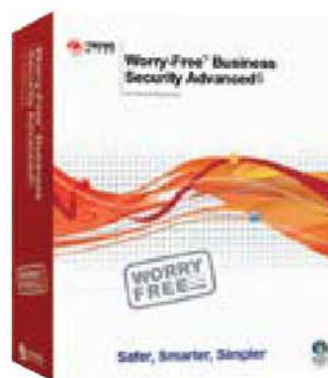
Unified, modular security built for manageability, anti-evasion and high availability

CALL FOR PRICING

- One unified software-based design for all network security controls
- An adaptive, affordable solution for all environments
- One integrated central management center
- A dynamic, contextually aware solution



CDW.com/trendmicro



Visit CDW.com/worryfreesecurity for free trial offer, videos and more

Trend Micro™ Worry-Free™ Business Security Services

Hosted security services for Windows®, Mac® and Android™

CALL FOR PRICING

Manage all of your devices from anywhere and know that your data is safe. As a hosted service, your machines are protected wherever they are connected from viruses, spyware, spam, malicious websites and more.



CDW.com/commvault

SIMPANA¹⁰

an exponential leap forward

Call your CDW account manager to find out how Commvault can save you money AND give you greater data access with more secure data management

CommVault® Simpana® 10

Enhance the performance, scale and resiliency of backup and archive to support the most data-intensive operations

CALL FOR PRICING

- Dramatically increase organizational productivity
- Empower mobile workers with anytime, anywhere self-service access to secure data from web and mobile devices
- Provide peace of mind knowing all of your organization's data is being stored in one single secure, efficient virtual repository
- Transform the way users discover, access and analyze information



CDW.com/symantec



FREE TRIAL AVAILABLE

Visit CDW.com/backupexec to calculate your ROI and download a FREE 30-day trial today

Symantec™ Backup Exec™ 2012

License With one-year Essential Support¹

CDW 2614989

\$747⁹⁹

- V-ray technology offers one product that unifies physical and virtual backups
- Includes integrated deduplication and replication
- Offers a choice among on-premises, appliance or cloud environments
- Includes "no-hardware disaster recovery" built in



CDW.com/citrix



Citrix® XenApp®

CALL FOR PRICING

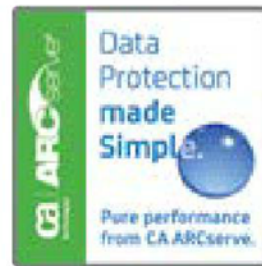
Citrix® XenApp® is a Windows® application delivery system that manages applications in the data center and delivers them as an on-demand service to users anywhere. XenApp reduces the cost of application management, increases IT responsiveness when delivering an application to distributed users and improves application and data security.

XenApp enables organizations to improve application management by:

- Centralizing applications in the data center to reduce complexity and lower the cost of desktop management by up to 50 percent
- Controlling and encrypting access to data and applications to improve security
- Delivering applications instantly to users anywhere on any device
- Simplifying and automating the process of delivering or updating applications, enabling IT to focus on strategic initiatives



CDW.com/ca



NEW VERSION

CA ARCserve® r16.5

Compatible with Microsoft® Windows Server® 2012/Windows 8

CALL FOR PRICING

CA ARCserve® r16.5 delivers many exciting features across our file backup, image backup, replication and high-availability products that take this award-winning solution to the next level.

- Reduce system downtime and improve disaster recovery and business continuity with CA ARCserve's remote virtual standby
- Quickly and easily protect VMware® virtual server environments and gain offsite data protection for disaster recovery with CA ARCserve's host-based VM backup and replication
- Gain a higher level of availability with CA ARCserve's cascading failover to multiple servers
- Simplify your Windows Server 2012 and Windows 8 system, application and data protection with CA ARCserve



FUJITSU ScanSnap SV600

Overhead scanner

CDW 3156991

\$ **653**.35

ew
erspective
scanning.

The ScanSnap SV600 contactless scanner provides PC and Mac users a new perspective on document scanning. Easily scan patient records and documents directly without cutting or damaging them. Equipped with high quality CCD optics and advanced LED illumination, the SV600 allows operators the ability to scan a variety of documents in just seconds.

- › Scans an A3 size area in less than 3 seconds
- › One button overhead scanning technology
- › Scans bound materials & flat documents
- › Book curve image flattening technology
- › Auto page turn detection sensor
- › USB 2.0 connectivity



CDW.com/lenovo



Lenovo ThinkCentre® M92p

Smart security for you
and intelligent performance
for your users

CDW 2862164

\$709.99

- 3rd generation Intel® Core™ i5-3470 vPro® processor (3.20GHz)
- Memory: 4GB/500GB hard drive
- DVD SuperMulti drive
- Intel® HD Graphics 2500
- Windows® 7 Pro 64-bit/
Windows 8 Pro 64-bit



Lenovo ThinkStation® S30

Meet the great machines that
make your work simpler

CDW 3145432

\$1627.99

Lease as low as \$51/mo.

See p. 19 for details

- Quad-Core Intel® Xeon® E5-1620V2 processor (3.90GHz)
- Memory: 4GB/1TB hard drive
- DVD-writer
- NVIDIA® Quadro® K2000
- Windows 7 Pro 64-bit



CDW.com/nuance

Nuance® PDF Converter Enterprise 8

A solution built for business

CDW 2719479

\$115.99

PDF Converter Enterprise 8 is smarter enterprise-ready PDF software that makes it easy for business users to create, convert, edit, assemble and share PDF files with colleagues or customers.

- Effortlessly create 100% industry-standard PDF files
- Get very accurate document conversion to editable PDFs
- Scan paper to PDF with easy one-click scanning



CDW.com/symantec

**FREE TRIAL
AVAILABLE**

Visit CDW.com/symantecendpoint
to calculate your ROI and
download a FREE trial today

Symantec™ Endpoint Protection 12.1.2

Outstanding security, blazing
performance, built for virtual
environments

100-249 user license

With three-year Essential Support¹

CDW 2422722

\$61.99

- Symantec Insight™
- Real-time SONAR™ 3
- Browser intrusion prevention
- Antivirus for Mac® and Linux®
- Faster central console
- Smart scheduler
- Enhanced client deployment



CDW.com/xerox

Xerox® DocuMate® 5445

Color sheetfed document scanner

CDW 2908361

\$842.00

- Mfr. speed rating: 45 ppm simplex, 90 ipm duplex
- Convenient 75-page auto document feeder (ADF)
- Duty cycle: up to 4000 pages per day
- Batch scan mixed paper and hard cards
- Bundled with TWAIN, ISIS, DriverPlus, Visioneer OneTouch with Acuity, Nuance PaperPort Pro, Nuance PDF Converter, OmniPage Pro



OUR SERVICES



CDW HEALTHCARE SERVICES

CDW Healthcare can support you throughout each of the key stages in developing a unified communications technology solution:

- Converged networking – committing to a single network is essential
- Popular VoIP solutions provide telephone services over your IP network and integrate easily with advanced unified communications applications

Call your CDW Healthcare account manager.

800.500.4239



CDW.com/hp



HP LaserJet® Pro M177FW

Network- and duplex-ready color laser printer

CDW 3167820

\$349^{.00}

- Mfr. speed rating: up to 17 ppm black, 4ppm color
- Print resolution: up to 2400 dpi
- Duty cycle: up to 20,000 pages per month
- Produce vivid colors with HP ImageREt 2400



CDW.com/xerox



Xerox® Phaser® 6600N

Network-ready color laser printer

CDW 2834061

\$549^{.00}

- Mfr. speed rating: up to 36 ppm black, 36 ppm color
- Print resolution: up to 1200x1200 dpi
- Duty cycle: up to 80,000 pages per month
- Intuitive two-line LCD user interface



CDW.com/lexmark



Lexmark™ MS810n

Network-ready mono laser printer

CDW 2848306

\$699^{.00}

- Mfr. speed rating: up to 55 ppm
- Duty cycle: up to 250,000 pages per month
- 550-sheet standard paper input, plus 100-sheet multipurpose feeder
- 2.4" color LCD screen
- Instant-on fuser for first page out as fast as four seconds
- High-yield 25,000 page aftermarket toner cartridge available



CDW.com/brother



Brother® HL-6180DWT

Wireless network- and duplex-ready monochrome laser printer

CDW 2765162

\$399^{.99}

- Mfr. speed rating: up to 42 ppm
- Print resolution: up to 1200x1200 dpi
- Duty cycle: up to 100,000 pages per month
- 1050 sheet capacity paper tray that handles letter or legal size paper
- Manual feed slot and rear paper exit provide a straight-through paper path



CDW.com/ricoh



Ricoh Aficio® SP 5200S

Network- and duplex-ready monochrome laser printer, copier and scanner

CDW 2561095

\$2599⁹⁹

Lease as low as \$81/mo., see p. 19 for details

- Mfr. speed rating: up to 47 ppm
- Print resolution: up to 1200x600 dpi
- Gain clear, unobstructed access to critical device information with an innovative 8.5" full-color tilting LCD panel
- 50-sheet automatic reversing document feeder
- Extend acceptable paper sizes up to 35" long in the bypass tray



CDW.com/hp



HP LaserJet® Pro M1536dnf MFP

Wireless monochrome laser printer, scanner, copier and fax

CDW 2199180

\$319⁰⁰

- Mfr. speed rating: up to 26 ppm
- Print resolution: up to 1200x1200 dpi
- Duty cycle: up to 8000 pages per month
- Print directly to your HP printer using a smartphone, notebook or other mobile device with HP ePrint¹
- One-year limited warranty



CDW.com/canon



Canon ImageCLASS MF6160dw MFP

Monochrome laser printer, copier, scanner and fax

CDW 3146316

\$283⁹⁹

- Mfr. speed rating: up to 35 ppm
- Print resolution: up to 1200x600 dpi quality
- 512MB memory
- Mobile features include Apple® Airprint[™], Google Cloud Print



CDW.com/xerox



Xerox® WorkCentre® 3325DNI

Wireless network- and duplex-ready monochrome laser printer, copier, scanner and fax

CDW 2724819

\$499⁰⁰

- Mfr. speed rating: up to 37 ppm
- Print resolution: up to 600x600 dpi
- Duty cycle: up to 80,000 pages per month
- Duplex automatic document feeder (DADF) makes faster work of two-sided scan, copy and fax jobs
- Powerful scanning capabilities include scan to email, network scanning and scan to USB memory device

CLINICAL COLLABORATION

To find out how one healthcare institution leveraged telehealth across its enterprise, **read our PeerView interview** with Avera Health at CDW.com/averapeerview or **read the entire case study** at CDW.com/averahealth



The need to provide faster, more accurate care to a larger patient base has never been greater – nor has the need to facilitate more streamlined, instant collaboration among physicians and specialists. A comprehensive telehealth solution can help you meet this need.

By one estimate,

1.8 million
patients

will be treated via telehealth worldwide by 2017, a sign of the growing acceptance of remote medical services.



Source: FiercehealthIT.com, June 2013

NComputing CDW.com/ncomputing



NComputing N500 SoC Thin Client

Expanding healthcare delivery at point of care for Citrix HDX deployments

CDW 2754837

\$219^{.99}

Designed to support and extend your Citrix® HDX deployments.

- Supports clinician workflow with tap-in/tap-out/tap-over secure roaming
- Secure access to centralized EMR and healthcare applications
- Options for wireless and dual monitor support
- All at 1/3rd the cost of a PC or traditional thin client devices

LG CDW.com/lg
Life's Good



LG 27EA83RD WQHD 27" LED Monitor

For striking images and sharp text

CDW 2953400

\$621^{.99}

Experience a new level of viewing pleasure with 4xHD resolution (WQHD) combined with AH-IPS featuring outstanding picture quality.

- Max. resolution: up to 2560x1440
- SRBG and IPS display technology for accurate color
- Supports picture in picture (PIP), HDMI and DP
- Professional color calibration ready



CDW.com/hp



HP EliteDesk 800

Embedded security with built-in peace of mind

CDW 3079568

HP SMART BUY

\$799¹

The 4th generation Intel® Core™ vPro™ processor strengthens security and increases productivity across your business.

- 4th generation Intel® Core™ i5-4570 vPro™ processor (3.20GHz)
- Memory: 4GB/500GB hard drive
- DVD SuperMulti drive
- Intel® HD Graphics 4600
- Windows® 8 Pro 64-bit

Novell

CDW.com/novell



Novell® Vibe™ OnPrem 3.4

Simplified licensing, an improved Office add-in and better mobile apps

License With one-year Standard Maintenance^{2,3}

CDW 3072281

\$83⁹⁹

- Brings people, projects and processes together in one secure place
- Enhances team productivity no matter where the team is or what devices they use
- Gives users the power to easily manage Office documents within the Vibe™ dashboard and access and sync files offline



CDW.com/polycom



Polycom® SoundStation® IP 7000

Astounding voice quality and clarity

CDW 1454462

CALL FOR PRICING

- Polycom® HD Voice™ for high-fidelity calls at up to 22kHz – for conference calls that sound as natural as being there
- Polycom Acoustic Clarity™ delivers the optimal conference phone experience without compromise
- Flexible configuration options – multiunit connectivity, expansion microphones and future integration with Polycom HDX®
- Strong, robust SIP software with advanced call handling, security and provisioning features



CDW.com/logitech



Logitech® HD Pro Webcam C920

Smoother, sharper, richer, clearer

CDW 2588857

\$94⁹⁹

- Enjoy razor-sharp images, even those close up with a glass lens designed with the help of innovative Carl Zeiss®
- Strong image tuning: exceptional optics, lighting compensation and image processing make your videos, video calls and photos more breathtaking
- Automatic adjustments for brightness, contrast, color saturation, colors and focus make high-quality video calling and recording a breeze

¹See page 19 for HP Smart Buy details ²Other licensing options available; contact your CDW Healthcare account manager for details

³Includes one year of product upgrades and technical support



CDW.com/rubbermaid



Display, scanner, mouse and keyboard sold separately

Rubbermaid® Medical AC-powered Medical Cart
16" height-adjustable cart with 40 AMP lithium battery
CDW 2106178

\$4675.00

Lease as low as \$146/mo., see p. 19 for details

- Smooth, nonporous surfaces for easy cleaning to promote infection control
- Raised edge around work surface helps retain spills
- Oversized 19" wide x 14" deep work surface
- Ergonomic handle for comfortable mobility
- Compact base, contoured at center to 14.5" for maximum maneuverability



CDW.com/ergotron



Display, scanner, mouse and keyboard sold separately

Ergotron® StyleView® LiFe Cart

LiFe powered cart for LCD, has two drawers
CDW 2915967

\$5686.99

Lease as low as \$178/mo., see p. 19 for details

Innovative, truly ergonomic and easy-to-maneuver healthcare cart features sit-to-stand height adjustment, side-to-side LCD and keyboard motion, bi-focal viewing and an adjustable back-tilt keyboard tray.

- LiFe battery makes the cart extremely lightweight and easy to move
- Ergonomic back-tilt keyboard tray ensures wrists remain in a neutral position during data entry – avoid repetitive-stress injuries while increasing comfort and productivity
- Open-architecture design accommodates multiple configurations



Now Playing: Video directly from your phone.

Chances are, when employees are on the phone they're also online, instant messaging, video conferencing, emailing, or all of the above. The Cisco Unified IP Phone 9900 Series from CDW is built for today's multimedia, multitasking world, connecting businesses with a suite of features designed to help staff work with more freedom and efficiency.

When fitted with the Cisco Unified Video Camera, users can conduct high-performance video conferencing directly from their phones. The large, high-resolution color display enriches the user experience and high-definition voice ensures maximum communication clarity, while Gigabit Ethernet switch ports and XML applications increase business value and reduce infrastructure costs. And with Bluetooth 2.0 and USB 2.0 ports supporting wireless and wired headsets, employees are free to talk — and work — untethered.

Visit www.CDW.com/Cisco to discover how the Cisco Unified IP Phone 9900 Series from CDW brings unified communications, powerful collaboration, and boundless connectivity right to users' desks.





CDW.com/cisco



Cisco® Unified IP Phone 7942G

Solutions unify voice, video, data and mobile applications on fixed and mobile networks

CDW 1300067

\$299.99

- Support for wideband (G.722 codec, adherence to TIA 920), including handset, headset and speakerphone
- Full-duplex speakerphone with acoustic echo cancellation
- IP address assignment can be statically configured or configured through the DHCP client
- Dedicated headset port eliminates the need for a separate headset amplifier and allows the handset to remain in its cradle



Cisco Unified IP Phone 7945G

Demonstrates the latest advances in VoIP telephony, including wideband audio support, backlit color display and an integrated Gigabit Ethernet port

CDW 1454026

\$425.99

- Onscreen display of text and/or graphics gives you the option to deliver customized information (such as the organization's directory) to every handset
- Support for major wireless and security standards
- Support for innovative new telephony applications
- Multiple network connectivity options



CDW.com/avaya



Avaya 9640G IP Phone

IP phone with gigabit adapter

CDW 1319869

\$822.99

- Supports 24 call appearances/feature keys
- 3.8" (9.65 cm) diagonal color 1/4 VGA display and embedded wideband speakerphone
- Dedicated call forward/mobility button, which provides one-touch access to communication manager mobility features such as extension to cellular
- 24-button expansion module



CDW.com/lifesize



LifeSize® Express 220™ 10x Camera and 2nd Generation Phone

Full HD video communications to help increase collaboration

CDW 2692021

\$8488.99

Lease as low as \$265/mo., see p. 19 for details

- Now offered with the new LifeSize® Phone™, LifeSize Express 220™ gives you Full HD video quality for natural, realistic interactions at the lowest possible bandwidth
- It also features crisp, crystal clear data-sharing and an all new digital I/O with Full HD support. With support for dual HD displays, Full HD camera, and phone or microphone options, LifeSize Express 220 offers strong flexibility

Jabra

CDW.com/jabra



Jabra PRO™ 920 Headset

Professional wireless headset

CDW 2546317

\$822.99

- Jabra PRO™ 920 frees users from their desks, enabling them to find documents and multitask with maximum efficiency while on a call
- Apart from being able to walk and talk up to 120 m/325' away from their desks, users will also benefit from enhanced ergonomics as the headset prevents neck strain caused by pressing a phone to their ear for long periods



CDW.com/ibm

IBM. Lotus. software

Team with CDW to build your solution, get exceptional licensing and world-class services to help ensure success

IBM® Sametime®

Improve and accelerate how work gets done

CALL FOR PRICING

IBM® Sametime® software provides integrated real-time communications services – voice, data and video – that make it easy for people to find, reach and collaborate effectively with others.

plantronics

CDW.com/plantronics



Plantronics® Savi® W740-M Headset¹

Changing the way productivity-focused workers communicate

CDW 2433279

\$267.99

- With three-way connectivity, easily manage and switch between PC, desk phone, and now mobile calls, from a single wireless headset
- With a new, convertible headset, the W740-M has been added to Plantronics' suite of wearing styles so you can choose the one that's best for you



CDW.com/microsoft

Lync 2013

Microsoft® Lync™ 2013

A complete unified communications solution

Open License Business²

CDW 2894664

\$29.99

- Unified experience
- Connect and collaborate
- Simple, essential, reliable conferencing
- Complete enterprise voice features
- Powerful deployment and management tools

OUR SERVICES



CDW HEALTHCARE SERVICES

CDW Healthcare can support you throughout each of the key stages in developing a unified communications technology solution:

- **Converged networking** – committing to a single network is essential
- **Voice over Internet Protocol (VoIP)** – popular VoIP solutions provide telephone services over your IP network and integrate easily with advanced unified communications applications
- **Unified communications advanced applications** – a thorough assessment of your communication requirements, workflow processes and network readiness can help you create a comprehensive UC strategy

**Call your CDW Healthcare account manager today.
800.500.4239**



CDW.com/hp



Group photo shown

HP 1910 Switch Series

Advanced gigabit smart managed switches with easy-to-use web-user interface

CDW 2097930

\$751^{.99}

- Available in 16-, 24- and 48-port models with 4-gigabit SFP uplinks with PoE options
- Advanced feature set with support for access control lists and static routing
- Energy-efficient design with power-saving green features
- Three-year warranty with next-business-day advance replacement



CDW.com/citrix



Citrix®

Advanced application delivery and web application acceleration

CALL FOR PRICING

- All-in-one web application delivery controller that makes applications run up to five times faster
- Available as a separate hardware network device or as a virtualized appliance
- Offloads servers, accelerates performance and integrates application security



CDW.com/cisco



Cisco® Catalyst® 2960S-24PS-L 24-port, Managed, Rack-mountable Switch

Providing improved ease of use, highly secure operations, improved sustainability and a borderless network experience

CDW 2029885

\$2162^{.57}

Lease as low as \$67/mo., see p. 19 for details

- Switches include Cisco® FlexStack switch stacking capability with 1Gb and 10Gb connectivity
- Fixed-configuration access switches designed for various-sized networks to provide lower total cost of ownership



Cisco 3945 Integrated Services Router for Desktop

Providing rich-media collaboration and virtualization

CDW 1895597

CALL FOR PRICING

- Delivers highly secure data, voice, video and application services to the small office
- Future-enhanced video capabilities
- High-powered service modules with improved availability
- Multi-core CPUs
- Gigabit Ethernet switching with enhanced PoE
- Energy visibility



CDW.com/juniper



Juniper Networks® EX3200-48T 48-port Ethernet Switch

Simple, cost-effective solution for low-density branch and regional offices

CDW 1394243

\$3821^{.99}

Lease as low as \$120/mo., see p. 19 for details

- Featuring complete Layer 2 and Layer 3 switching capabilities, the EX3200 satisfies the wiring closet connectivity requirements of today's high-performance businesses
- Delivers up to 18.6W of Class 3 PoE on the first eight ports for supporting networked devices such as telephones, video cameras and wireless LAN access points in converged networks
- Can support optional four-port Gigabit Ethernet (GbE) and two-port 10GbE uplink modules with pluggable optics to provide high-speed connectivity to aggregation layer switches or other upstream devices



Juniper® MAG4610 JUNOS® Pulse Gateway

Designed to enable SSL VPN and network access control capabilities

CDW 2406271

\$3999^{.99}

Lease as low as \$125/mo., see p. 19 for details

- Supports either SSL VPN or NAC functionality in a fixed hardware configuration design
- 1U high, one-half width chassis that may be deployed side-by-side in a 1U space
- Supports up to 1000 concurrent SSL VPN and 5000 concurrent NAC users



CDW.com/cisco



Cisco® ASA 5515-X Firewall Edition – Security Appliance

Delivers multiscale performance and functionality

CDW 2643207

\$3199⁹⁹

Lease as low as \$100/mo., see p. 19 for details

- The Cisco® ASA 5515-X midrange security appliance uses the Cisco SecureX Architecture™ for a context-aware, network-centric approach to security that enables consistent security enforcement throughout the organization
- It is built on the same proven security platform as the rest of the ASA family of security appliances and has been designed to deliver powerful performance for optimal operational efficiency



CDW.com/barracuda



Barracuda® Spam and Virus Firewall 300 with One-year Energize Updates

Protect your organization from email-borne threats and data loss

CDW 964406

\$2676⁹⁹

Lease as low as \$84/mo., see p. 19 for details

- Compatible with all email servers
- Enforce Data Loss Prevention (DLP) policies
- Pre-defined HIPAA filters
- Outbound email scanning and outbound email encryption
- Cloud protection layer ensures continuity of operations
- Microsoft® Exchange/LDAP accelerator
- Supports 1000 active email users
- All-inclusive, with no per-user or per-feature fees
- One year Energize Updates keeps your spam and virus definitions up-to-date and your organization protected



CDW.com/watchguard



WatchGuard® XTM 515 With One-year Security Bundle

Complete extensible threat management solution

CDW 2783293

\$2295⁰⁰

Lease as low as \$72/mo., see p. 19 for details

- Delivers strong security, up to 2Gbps firewall throughput and seven Ethernet interfaces – six GigE and one FE – to support high-speed LAN backbone infrastructures and gigabit WAN connections
- IT administrators can manage security from a centralized console, scriptable CLI and web UI
- Real-time monitoring and rich reporting are included at no extra cost
- Easily scales to accommodate growth



The Security Division of EMC

CDW.com/rsasecurity



Smartphone not included

RSA SecurID® Authentication Manager

Convenient and cost-effective, two-factor authentication solution

CDW 799449

CALL FOR PRICING

- Lowers the total cost of ownership
- Delivers flexibility and convenience of a new risk-based authentication
- Maximizes the potential of your virtual environment
- Prepares for advanced threats that many organizations are facing today

HCAHPS

AND THE PATIENT EXPERIENCE



WHY IT'S TRENDING ↑

HCAHPS has become the buzzword of the patient experience movement in healthcare.

Short for "Hospital Consumer Assessment of Healthcare Providers and Systems," this standardized survey is the new benchmark against which patient satisfaction in hospitals is measured.

WHY SO IMPORTANT? ↻

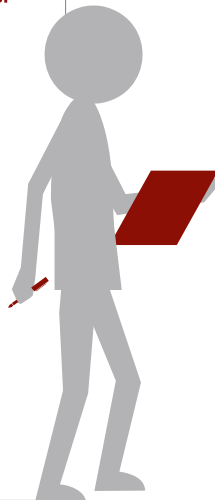
Because HCAHPS scores now have a direct impact on Medicare reimbursement. Lower scores equate to fewer Medicare funds, meaning keeping patients happy has become one of the biggest trends to date, and will continue to be a top trend in 2014.

But HCAHPS scores are just one drive in the push to elevate patient satisfaction. Improving the patient experience is also a hot topic for hospitals because the healthcare arena has become a competitive marketplace.

In a world where patients have multiple choices about where to receive care, hospitals must now compete to both attract and retain business. It's integral to stand out from the hospital up the road – and any other differentiator one can tout, from shorter ER wait times to cutting-edge technology in patient rooms, becomes an asset.

The HCAHPS survey contains 21 patient perspectives on care and patient rating items that encompass nine key topics:

- Communication with doctors
- Communication with nurses
- Responsiveness of hospital staff
- Pain management
- Communication about medicines
- Discharge information
- Cleanliness of the hospital environment
- Quietness of the hospital environment and transition of care.¹



70%

OF HOSPITAL EXECUTIVES
REPORTED THAT
IMPROVING THE PATIENT EXPERIENCE
IS ONE OF THEIR ORGANIZATION'S
TOP THREE PRIORITIES.²

Stay on top of the latest healthcare IT industry trends and updates. Visit CDW.com/view



PERCENTAGE of healthcare organizations using HCAHPS scores to measure overall improvement in the patient experience.³

86%



I.T. PLAYS A KEY ROLE IN PROVIDING THE DATA USED IN PATIENT SATISFACTION MEASUREMENT AND FEEDBACK TO:



Enable clinicians to deliver improved patient care



Streamline communications and improve staff efficiency



Empower caregivers with information at the point of care⁵



28%

of health leaders are investing in the patient experience to maximize their revenue via better HCAHPS scores.⁴

WANT MORE TREND INFO? 📌

Listen to both our podcasts about the patient experience:

"Trends Impacting the Patient Experience at the Point of Care"

CDW.com/POCpodcast1

"Interactive Patient Technology at the Point of Care"

CDW.com/POCpodcast3





Microsoft® Office 365® Pro Plus

Simplify your IT with up-to-date Office tools and services



Open License Business¹

CDW 3120382

\$144^{.00}

- You can access Office from virtually anywhere, across devices, so everyone in your business has the freedom and flexibility to be more productive wherever they're working
 - It's easy to keep the work flowing when you have tools that make communicating with team members, partners and customers a rich and convenient experience
 - Comprehensive solutions, such as desktop productivity applications, portals, extranets, external websites, instant messaging (IM), voice conferencing, video conferencing, web conferencing, email and voicemail
-



¹Purchase five licenses OR one processor license to qualify for the Microsoft Open License Business program; media must be purchased separately; call your CDW Healthcare account manager for details



Microsoft® Office 365® Pro Plus

Simplify your IT with up-to-date Office tools and services

Open License Business¹

CDW 3120382

\$144.00

- You can access Office virtually anywhere, across devices, so everyone in your business has the freedom and flexibility to be more productive wherever they're working
- It's easy to keep the work flowing when you have tools that make communicating with team members, partners and customers a rich and convenient experience



CDW.com/cisco



Cisco® Unified Workspace Licensing Standard Edition

Services that help organizations maximize the potential of unified communications

CDW 2856298

\$301.24

- Allows organizations to access a wide range of Cisco® collaboration applications and services in a cost-effective, simple package
- License includes soft clients, applications server software and licensing on a per-user basis
- Available in Professional or Standard Edition



CDW.com/citrix



Citrix® XenDesktop®

Deliver desktops and apps on demand to every user
CALL FOR PRICING

- Enable virtual workstyles to increase workforce productivity from anywhere
- Leverage the latest mobile devices to drive innovation throughout the organization
- Adapt quickly to change with fast, flexible desktop and app delivery for offshoring, M&A, branch expansion and other initiatives
- Transform desktop computing with centralized delivery, management and security



CDW.com/mcafee



McAfee® Complete Endpoint Protection – Business

High-performance security for dynamic businesses

101-250 user With One-Year Gold Support²

CDW 3038619

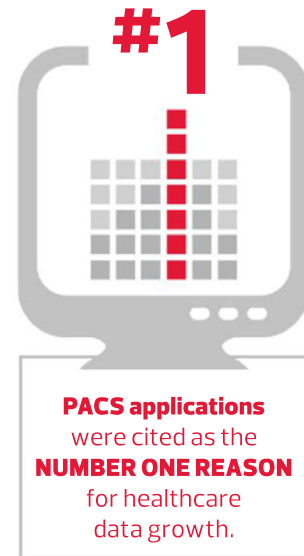
\$59.99

- Defend all your endpoint devices, from traditional desktops and notebooks to storage servers and employee-owned smartphones.
- Deploy fast, top-scoring hardware-enhanced protection to protect against today's stealthy, advanced threats
 - Get unified management across all your endpoints: PCs, Macs, Linux® systems, virtual machines, servers, smartphones and tablets
 - View security health and act in real time to remediate vulnerabilities and stop threats in their tracks
 - Innovative encryption technologies secure confidential data across PCs, notebooks, network servers and removable media while enabling secure file sharing

TECHNOLOGY IN PRACTICE

Rapid access to accurate medical images is a critical part of ensuring quality patient care; yet many physician practices may be hampered by sluggish or outdated picture archiving and communications systems (PACS) that can no longer support today's requirements.

By updating your systems to include the latest PACS hardware and software, you can proactively prime your infrastructure to handle the growing influx of digital patient images, while creating a safer and more conducive environment for the sharing of information.



Source: International Healthcare Data Management Survey



CDW.com/lenovo



Lenovo ThinkCentre® M82
Manageability, security, productivity
CDW 2862176

\$659.⁹⁹

- 3rd generation Intel® Core™ i5-3570 processor (3.40GHz)
- Memory: 4GB/1TB hard drive
- Intel® HD Graphics 2500
- Windows® 7 Pro 64-bit/Windows 8 Pro 64-bit

Join the Conversation
CDW.com/communIT

See what your peers are saying about PACs.



CDW.com/hp

**HP LA2205wg LCD Monitor**

22" analog/digital/DisplayPort®

CDW 1906059

\$134.99

Helps increase productivity and lower costs through advanced user comfort and environmental design.

- Max. resolution: up to 1680x1050
- Response time: 5ms
- Panel brightness: 250 cd/m²
- Three-year limited parts and labor warranty

**HP LaserJet® Pro 200 Color M276NW**

Network- and duplex-ready color laser printer

CDW 2798007

\$468.99

- Mfr. speed rating: up to 14 ppm, black and color
- Print resolution: up to 600x600 dpi
- Duty cycle: up to 30,000 pages per month
- Produce vivid colors with HP ImageREt 3600 and ColorSphere II toner
- Reduce energy use with HP auto-on/auto-off technology; also save with instant-on technology



CDW.com/symantec

FREE TRIAL
AVAILABLE

Visit CDW.com/symantecendpoint
to calculate your ROI and
download a FREE trial today

**Symantec™ Protection Suite Enterprise Edition**

Proactive protection for notebooks, desktops, servers, messaging and web environments

100-249 user license With three-year Essential Support¹

CDW 2422938

\$117.99

- Fast, effective protection powered by Symantec™ Insight
- Catch more than 99% of spam and prevent data loss with advanced content filtering to identify and control the flow of sensitive data in email and IM
- Web gateway security protects against web threats, including malicious software, spyware, botnets, viruses and malware
- Rapid data and system recovery recovers individual files and folders in seconds or complete Windows systems in minutes to dissimilar hardware or virtual environments
- Integrated protection technologies such as network access control, anti-virus, anti-spyware, desktop firewall, intrusion prevention and application and device control technologies



CDW.com/microsoft

Lync 2013**Microsoft® Lync® 2013**

A complete unified communications solution

Open License Business²

CDW 2894664

\$29.99

Microsoft® Lync® Server 2013 delivers complete presence, instant messaging, conferencing and enterprise voice capabilities through a single, easy-to-use interface that is consistent across PC, browser and mobile devices. Administrators benefit from a single, consistent management infrastructure, new capabilities to increase availability and interoperability with existing systems.

- Unified experience
- Connect and collaborate
- Simple, essential, reliable conferencing
- Complete enterprise voice features
- Powerful deployment and management tools

CDW HEALTHCARE GIVES YOU MORE WAYS TO

SAVE



REBATES

DON'T FORGET!
Take advantage of manufacturer
rebates and special
offers!



FOLLOW US!

Follow us on Twitter to stay on top of
weekly IT trends, news, events and
much more.

[Twitter.com/CDW_Healthcare](https://twitter.com/CDW_Healthcare)

STAY INFORMED



Visit CDW.com/view



Healthcare IT trends continually evolve – as
do the technology requirements of your
healthcare organization.

To help you keep up with what's hot and what's
on the horizon, look to CDW's Industry View
to stay on top of the trends.

INDUSTRYview
Healthcare I.T. Insights



DEAL OF THE WEEK

With CDW's Deal of the Week, you
get exclusive offers on desktops,
notebooks and more delivered right to
your mailbox each week.

 Follow @CDWBESTDEALS

CDW OUTLET



Visit CDW.com/outlet to start saving.

The CDW OUTLET Delivers Thousands of Quality Technology Products at Low Prices.

From notebooks to servers to storage
and more, you'll find it all in the outlet.



High-Quality Guarantee

We only include an item in
CDW Outlet if it falls into one
of the following categories:

- Customer return
- Damaged packaging
- Missing user manual
- Minimal cosmetic damage
- Overstocked item
- Demo item
- Refurbished item

Items that are defective, have more than minimal
cosmetic damage or are missing needed parts
aren't suitable for resale and will not be offered.



Purchase with Confidence

To ensure the same quality and
performance you'd get with a
non-CDW Outlet item, all desktops,
notebooks and servers have
been carefully inspected by
our certified technicians.

All CDW Outlet items come with:

- Standard 30-day return policy
- Full technical support
- Full manufacturer's warranty or,
in most cases, equivalent support
from CDW (extended warranties
available with some products)

Outlet items cannot be backordered.

To verify availability, please contact your
CDW account manager.

Ergotron LX Sit-Stand Wall Mount System

Complete, compact wall-mount workstation

Effortlessly and independently position the LCD and keyboard to the most comfortable viewing and typing position, all while maintaining eye contact with your patient. When not in use, simply push the system and fold it up tight against the wall.



Keyboard, mouse, processor, and display sold separately

- Articulating arms feature full tilt/pan capability and height adjustment, providing premium ergonomic adjustment
- Holds monitors from 7-25lbs and up to 42"
- LX Sit-Stand: Extends LCD up to 33" (84 cm); keyboard extends up to 42" (107 cm); push your display and keyboard out of the way when not in use
- LX: Extends LCD up to 25" (64 cm); keyboard extends up to 35" (89 cm)
- LX Sit-Stand: Easily adjust height of components on Wall Track by loosening set-screws
- LX Sit-Stand: Secure installation — locking connections between arm, extension and base
- Ergonomic back-tilt keyboard tray ensures wrists remain in a neutral position during data entry — avoid repetitive-stress injuries while increasing comfort and productivity
- Creates a complete and compact workstation
- Integrated cable management and cable channels organize and route cables out of the way

CONTACT YOUR CDW HEALTHCARE ACCOUNT MANAGER AT 800-500-4239





CDW.com/3m



Display sold separately

3M™ MA120MB

Single-swivel monitor arm

CDW 2785201

\$92.99

This adjustable monitor arm allows for ergonomic height adjustment to fit your needs.

- Mounting kit including desk clamp mount, pole and the swivel arm
- Height adjustment, tilt and swivel
- Max. load weight: 30lbs.



Displays sold separately

3M 21.5W Privacy Filter

For 21.5" widescreen display

CDW 1768253

\$92.99

- Helps protect screen from scratches and abrasions
- Utilizes 3M™ microlouver technology makes on-screen data visible only to the person directly in front of the screen
- Reduces reflections when used with the matte side facing you
- One-year warranty



CDW.com/ergotron

Display, keyboard and mouse sold separately



Ergotron® StyleView® Vertical Lift

Supports displays up to 24"

CDW 1633520

\$525.99

Designed for space-constrained and high traffic areas.

- Low-profile vertical lift provides 9" (23 cm) of smooth vertical adjustment
- Folds into a slim, compact unit when not in use – less than 4" (10.2 cm) from the wall
- Unique cable management system conceals and organizes cords and makes cleaning a snap



Peerless® Flat Panel Floor Cart SC590

Supports 32"-90" screen

CDW 2932600

\$589.99

Allows you to hold meetings with AV support or simply to display information.

- Incremental tilt of -2°, 0° and +5° locks in the ideal viewing angle
- Internal cable management for clean, clutter free look
- Maneuvers easily on 4" (102mm) swivel casters, two locking
- Customizable with accessories
- Five-year limited warranty

Panasonic CDW.com/panasonic



Panasonic TH 42LRU6

42" class Pro:Idiom backlit LCD TV

CDW 3166271

\$634.⁹⁹

- Built-in ambient light sensor (C.A.T.S.) automatically adjusts the television's screen brightness and contrast to suit the lighting of the room
- Helps keep power consumption low – so you can maximize your guests' experience while saving on energy costs
- The space-saving design allows you to replace older models with a larger screen size without taking up more space

acer CDW.com/acer



Acer B246HLYmdr

24" analog/digital LED monitor

CDW 2978001

\$206.⁹⁹

Exceptional visuals and comfortable viewing over long periods of time.

- Max. resolution: up to 1920x1080 Full HD
- Panel brightness: 250 cd/m²
- Response time: 5 ms
- Three-year limited warranty

NEC CDW.com/nec



NEC MultiSync® EA224Wmi 22" LED

High-performance, LED-backlit LCD

CDW 2825298

\$269.⁹⁹

A completely redesigned chassis with a host of enhanced features, advanced technologies, future-proof connectivity and environmentally friendly benefits.

- Four-way ergonomic stand boasts pivot, tilt, swivel and height adjustment up to 130mm to maximize your viewing comfort
- Three-year parts and labor warranty, including backlight

LG CDW.com/lg
Life's Good



LG IPS235P-BN

23" wide IPS LED monitor

CDW 3099606

\$184.⁹⁹

Original color and user-centered design will maximize your performance.

- Pixel pitch: 0.265mm
- Panel brightness: 250 cd/m²
- Contrast ratio: 1,000:1
- Three-year limited parts and labor warranty



CDW.com/hp



HP EliteBook 840 Notebook

The 4th generation Intel® Core™ vPro™ processor strengthens security and increases productivity across your organization

CDW 3133577

HP SMART BUY

\$1489.99¹

Lease as low as \$47/mo., see p. 19 for details

- 4th generation Intel® Core™ i5-4300U vPro™ processor (1.90GHz)
- Memory: 4GB/180GB SSD
- 14" HD+ SVA anti-glare display
- Intel® HD Graphics 4400
- Windows® 7 Pro 64-bit downgrade/Windows® 8 Pro



HP ElitePad 900

Elegant design and touch experience put productivity at your fingertips

CDW 2904701

HP SMART BUY

\$609.99¹

- Intel® Atom™ Z2760 processor (1.50GHz)
- Memory 2GB/32GB solid-state drive
- 802.11a/b/g/n and Bluetooth® 4.0 HS
- 10.1" WXGA Corning® Gorilla® Glass 2 display
- Windows 8 Pro



CDW.com/casellogic

Life, Simplified.



Case Logic Laptop Slim Case

Slim, compact case has separate, protective pockets for both a notebook up to 14.1" and a tablet

CDW 2887015

\$23.99

- Files remain crisp and unbent in their designated pocket, separated from your electronics
- Front pocket stores bulky power cords neatly in the bottom and out of the way
- Organizer panel in front pocket with dedicated storage for external hard drive, pens and other accessories
- Zippered front pocket keeps your smartphone secure yet easily accessible
- Luggage strap securely attaches slim case to most rolling luggage

HP 2012 90W Docking Station

Desktop convenience with full port replication capability in a space-saving design

CDW 2746471

HP SMART BUY

\$237.99¹

- Conveniently charges the notebook while it is in the docking station
- Four USB 3.0 ports
- Support for DisplayPort® 1.2
- Optional integrated HP docking station cable lock for securing the dock and notebook with one lock



HP Ultra-slim Expansion Base

Dock your notebook PC to utilize peripherals without needing to constantly plug and unplug

CDW 2072053

\$196.99

- 3x USB 2.0 ports
- eSATA port
- Digital audio/video port
- Built-in DVD±RW drive
- Security lock slot
- One-year limited warranty





CDW.com/lenovo

**Lenovo ThinkPad® Edge E531**

Powerful performance, exceptional value

CDW 3016945

\$594.⁹⁹

- 3rd generation Intel® Core™ i3-3120M processor (2.50GHz)
- Intel® HD Graphics 4000
- 4GB RAM/320GB hard drive
- DVD-writer
- 15.6" LED backlit display with camera
- Windows® 8 Pro 64-bit / Windows 7 Pro 64-bit downgrade

**Lenovo ThinkPad T530**

A lightweight and feature-rich notebook built for mobile professionals

CDW 2853703

\$1039.⁹⁹

Lease as low as \$33/mo., see p. 19 for details

- 3rd generation Intel® Core™ i5-3320M vPro™ processor (2.60GHz)
- Intel® Centrino® Advanced-N 6205
- Memory: 4GB/500GB hard drive
- DVD-writer
- Intel® HD Graphics 4000
- 15.6" HD antiglare LED backlit display with camera
- Windows 8 Pro 64-bit / Windows 7 Pro 64-bit downgrade

**Box Enterprise Unlimited**

A secure collaboration and content-sharing platform

CALL FOR PRICING

With Box, say goodbye to the frustrations of sharing documents through email and FTP and hello to simple, fast, cloud-based collaboration and content sharing. Maintenance, shared logins, downtime and bandwidth limitations become a thing of the past – simply get your work done anywhere, on any device.



CDW.com/novell

**Novell® Filr****50-user license plus 1-year Priority Maintenance¹**

CDW 3022695

\$4704.⁹⁹

Designed with the enterprise in mind, resulting in less administration, better security and more productive users.

Novell Filr works with existing file servers and network infrastructures, combining modern file access methods with the security that organizations already have in place.

Novell Filr provides file access and sharing, and lets users access their home directories and network folders from mobile devices. Users can also synchronize their files to their PC and Mac computers, share files internally and externally, and comment on files.

POINT-OF-CARE

PATIENT ROOM TECHNOLOGY

With the ability to access and capture data electronically in the patient room, practitioners can diagnose and treat patients faster and more accurately and reduce the risk of medical errors.



SUPPORT YOU CAN **COUNT ON**

The right patient room technology solution from CDW Healthcare can play a critical role in helping your organization:



Improve quality of patient care



Increase patient satisfaction



Boost physician efficiency



Enhance standards compliance



Speed prescription fulfillment



Reduce costs



For more information about this or our other solutions visit CDW.com/communiT 



ASSESSMENT / **PLANNING** / **DESIGN**

CDW Healthcare's assessment/planning/design services help lay the groundwork for the most effective IT strategy within your healthcare organization. We offer a range of services, including:



Data center audits.

Data center experts perform a detailed assessment analyzing your server, storage, power and cooling technologies to identify weak points and provide recommendations for data center optimization.



Network infrastructure audits.

We will consult with you to assess your current network infrastructure and provide guidance through strategy planning and design sessions.



Microsoft licensing and consulting services.

Our software licensing experts will help you maximize your software investment. We'll help you purchase the exact type and quantity of Microsoft software and packages you need and ensure your Microsoft software deployment is executed successfully.

Please remember to recycle.



One CDW Way
230 N. Milwaukee Avenue
Vernon Hills, IL 60061

Current Business Customer or

PRSRT STD
U.S. POSTAGE
PAID
CDW LLC

Your account number is

Key Code

140205
Flyer 143323

CONNECT WITH US



Healthcare CommuniT.



SOLUTIONS

Our online healthcare community is a helpful resource containing a wide variety of healthcare-related materials. Here you'll find information on our healthcare IT solutions, support and services along with webinars, white papers, success stories and much more.

Site features include:

- Latest news and trends impacting the healthcare industry
- Interviews with healthcare leaders sharing best practices
- Peer-to-peer hospital and physician practice success stories
- Technology solutions by department and facility type

Whether you're looking to implement the right technology solution for your organization or learning about the latest healthcare trends, turn to CDW Healthcare's CommuniT. for the most up-to-date information.

CDW.com/communiT



For more information, contact a CDW Healthcare account manager today at 800.500.4239