

Stowaway™ Portable Keyboard
for Pocket PCs

USER'S GUIDE
Making Your Mobile Life Easier.

LONDON

PARIS

NEW YORK

LOS ANGELES

TORONTO

HONG KONG

SYDNEY

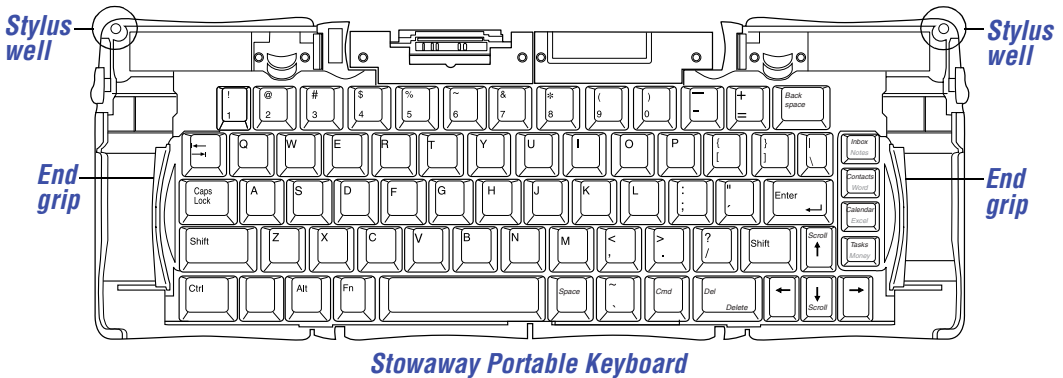
Contents

Installing the Targus Stowaway Keyboard Software	4
Setting Up and Connecting Your Pocket PC to the Stowaway Portable Keyboard	6
Opening the Keyboard	6
Attaching Your Pocket PC	8
Closing the Keyboard	9
Using the Stowaway Portable Keyboard	11
Stowaway Key Functions	11
Things to Remember	16
Customizing the Stowaway Portable Keyboard Features	18
Troubleshooting	27
Frequently Asked Questions	27
Technical Support	28
Product Registration	29
Warranty	29
Regulatory Compliance	30
FCC Statement	30

Targus Stowaway Portable Keyboard

The Stowaway™ Portable Keyboard is a convenient solution for typing data and commands into your pocket PC. This compact, fully functional keyboard:

- Enables you to type text and special characters into your pocket PC quickly and easily
- Lets you instantly launch your favorite applications with simple key commands
- Folds down to a convenient pocket size for traveling



In addition to this user's guide, this package contains:

- Targus Stowaway Portable Keyboard
- Targus Stowaway keyboard software

Installing the Targus Stowaway Keyboard Software

Before installing the software, make sure that:

- You save all open documents.
- The Microsoft® ActiveSync® application is installed and running on your notebook or desktop computer.
- You disable any previously installed keyboard software.
- Your pocket PC has at least 80 KB free memory.



NOTE: To check the amount of free memory, tap **Start** and select **Settings**. Tap the **System** tab, then **Memory**.

To install the Stowaway keyboard software:

- 1 Insert your pocket PC into its synchronizing cradle and back up your files.



CAUTION: If your pocket PC is synchronizing files, wait for synchronization to complete before beginning the Stowaway keyboard setup.

- 2 Insert the Stowaway keyboard software CD into your computer's CD-ROM drive.
- 3 If setup does not begin automatically, click **Start**, then **Run**, and enter D:\setup.exe (where D: is the path of the CD-ROM drive) and then click **OK**.
The Welcome screen appears.
- 4 Click **Next**.
The License Agreement screen appears.
- 5 Select "I accept the terms in the license agreement" and click **Next**.
The Stowaway Application Language screen appears.

- 6 Select the language of the Stowaway application that you want to install and click **Next**.

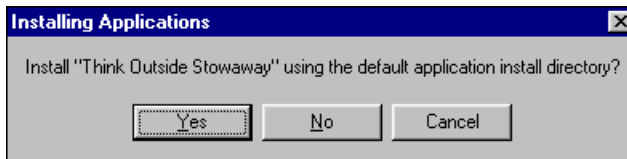
The Keyboard Layout screen appears.

- 7 Select the keyboard layout language(s) you want to install and click **Next**.

The Ready to Install screen appears.

- 8 Click **Install**.

The following screen appears.



Installing Applications screen

- 9 Click **Yes**.

The application files are then sent to your pocket PC and the following screen appears.



Application Downloading Complete screen

- 10 Click **OK**.

The Installation Complete screen appears.

- 11 Click **Finish**.

To verify that installation is complete on your pocket PC, tap **Start**. Stowaway is now visible in the Start menu.


Setting Up and Connecting Your Pocket PC to the Stowaway Portable Keyboard

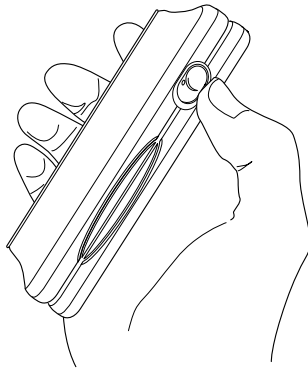
This section describes how to open and close the Stowaway keyboard, and how to attach it to your pocket PC.

 **NOTE:** You must install the Stowaway keyboard software before you can use the keyboard. See [“Installing the Targus Stowaway Keyboard Software”](#) on page 4.

Opening the Keyboard

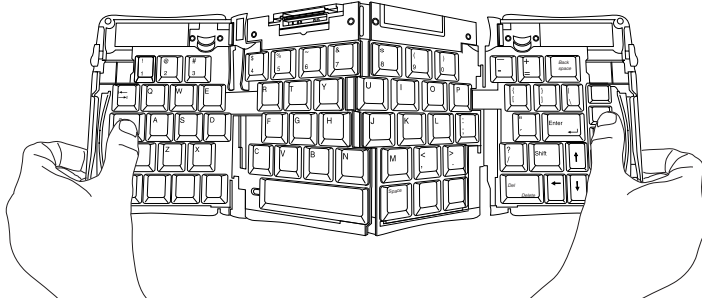
- 1 Hold the unit and, using your thumb, push the latch down to unlock the case.

 **NOTE:** Holding the Stowaway keyboard with both hands when opening the keyboard provides better stability.



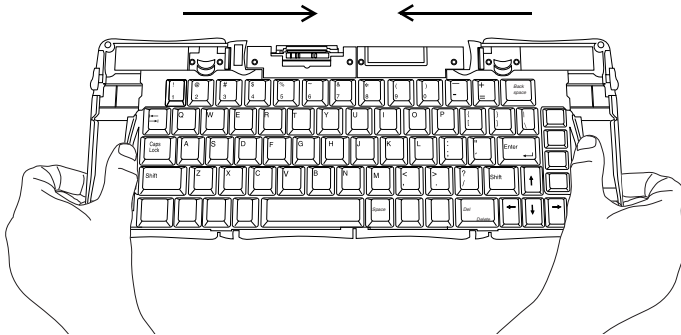
Unlocking the Stowaway keyboard

- 2 Unfold the keyboard and set it on a firm, flat surface.



Unfolding the Stowaway keyboard

- 3 Slide the red end-grips inward, bringing the keyboard sections together.



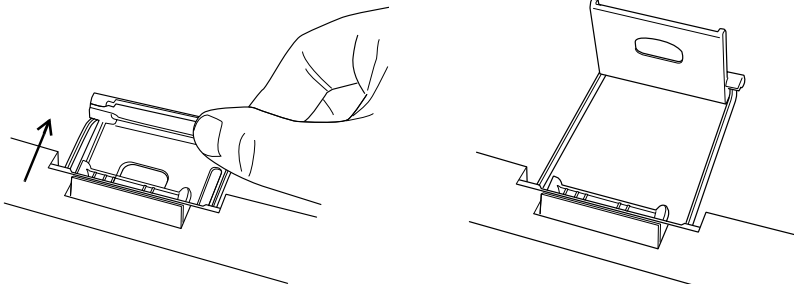
Sliding the Stowaway keyboard ends together

Attaching Your Pocket PC

- 1 Locate the docking mechanism, underneath the docking connector, at the top of the keyboard, and slide it all the way out of the keyboard until the support foot flips up.



NOTE: If the support foot does not flip up, check that the docking mechanism is fully extended.



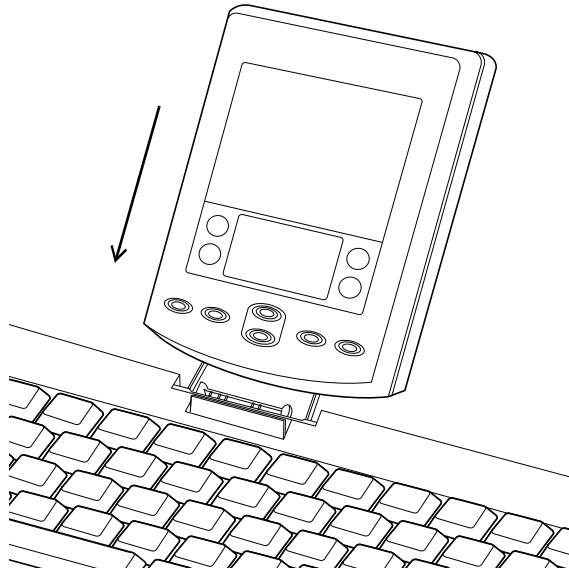
Extending the docking mechanism and support foot

- 2 Lift the docking connector until it clicks into place.
- 3 Turn off your pocket PC (if it is on).



NOTE: Your pocket PC only recognizes the Stowaway keyboard when it powers up. To ensure that your pocket PC immediately recognizes the Stowaway keyboard, turn off your pocket PC before attaching it to the keyboard. Otherwise, to use the keyboard, you must turn off your pocket PC while it is firmly connected to the keyboard, and then turn it back on.

- 4 Line up your pocket PC with the alignment marker on the keyboard docking connector and push down gently to make the connection.



Connecting your pocket PC to the Stowaway keyboard

- 5 Turn on your pocket PC and begin typing.

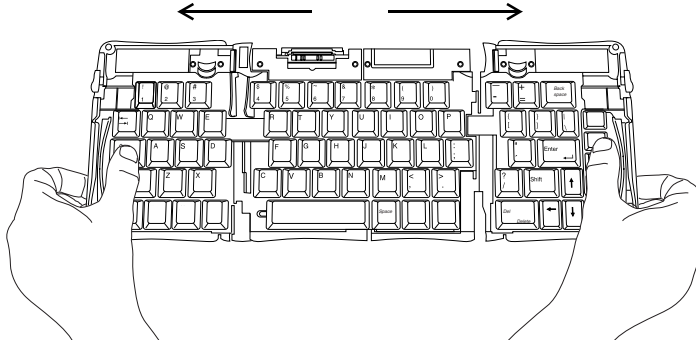


NOTE: Use the keyboard on a firm, flat surface for optimum performance and stability.

Closing the Keyboard

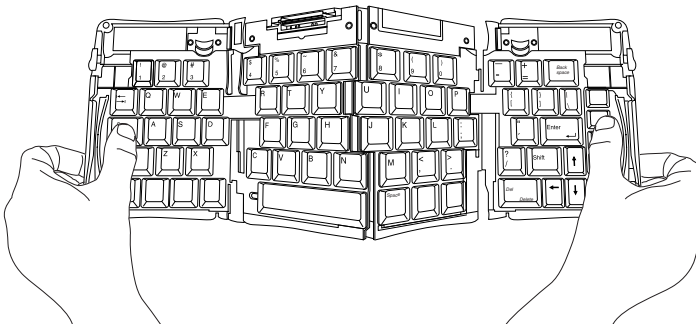
- 1 Pull your pocket PC upward to remove it from the docking connector.
- 2 Fold down the docking connector and support foot until flat, then slide the docking mechanism into the keyboard.

- 3 With the keyboard still on a flat surface, slide the red end-grips toward the ends of the case, separating the keyboard sections as far apart as possible.



Sliding the Stowaway keyboard ends apart

- 4 Lift the keyboard, push the center up to form a “W,” then close the keyboard, pressing the four corners of the case together until they click into place.



Folding the Stowaway keyboard

Using the Stowaway Portable Keyboard

Once you have installed the Stowaway keyboard software and restarted your pocket PC, the keyboard software runs automatically and you can use the keyboard at any time to enter characters or commands.

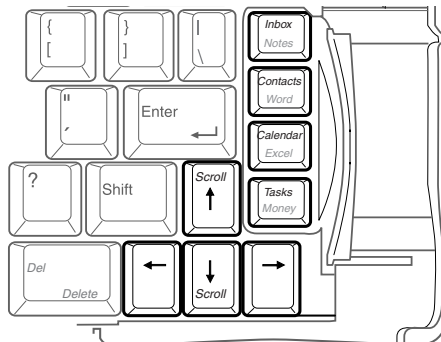


NOTE: If the keyboard does not function after installing the Stowaway keyboard software and restarting the pocket PC, check the settings in the Stowaway application. See [“Using the Stowaway Application”](#) on page 18.

Stowaway Key Functions

Most keys on the Stowaway keyboard work in the same way as on a standard keyboard. The exceptions are:

- **Application keys** The Inbox/Notes, Contacts/Word, Calendar/Excel, and Tasks/Money keys are preprogrammed shortcut keys on the right side of the keyboard.
- **Today key** The Today key activates the Today application.
- **Caps Lock key** The Caps Lock key toggles the Caps Lock mode in the Stowaway keyboard.



Application and navigation (arrow) keys


Navigation Keys

The navigation or arrow keys, located in the lower-right corner of the Stowaway keyboard, enable you to quickly relocate the cursor on your pocket PC by using the Fn, Shift, and Ctrl keys in combination with the arrow keys. The following table lists the available navigation key combinations.

Key	Result
Fn +	
↑	Emulates the Page up key.
↓	Emulates the Page down key.
←	Emulates the Home key.
→	Emulates the End key.
Shift +	
↑	Highlights one line of text above from the cursor position.
↓	Highlights one line of text below from the cursor position.
←	Highlights one character to the left of the cursor position.
→	Highlights one character to the right of the cursor position.
Ctrl +	
↑	Moves the cursor up one paragraph.
↓	Moves the cursor down one paragraph.
←	Moves the cursor to the right one word.
→	Moves the cursor to the left one word.

Fn Keys

The Fn key on the Stowaway keyboard enables additional key functions such as Num Lock and Menu. Keys embedded in blue have alternative functions which you access by pressing Fn + <key>. The following table lists the available Fn key function combinations.

Key Sequence	Emulates	Result
Fn + Caps Lock	Num Lock key	Enables the numeric characters embedded in brown at the lower-right corner of the keys that make up the numeric keypad. The Num Lock setting emulates the 10-key numeric keypad interface found on most standard keyboards.
Fn + Backspace	Off key	Turns off your pocket PC. To turn it back on, press the Power button.
Fn + Enter	OK key	Selects the “OK” in the top-right corner of the display. Selecting or tapping “OK” usually closes the window.
Fn + Tab	ESC key	Closes the current window, exiting the application, if supported. ESC functions may vary between applications.
Fn + number	Hot-keys	Launches a specific user-defined application. For more information, see “Assigning Hot-Keys” on page 20 .
Fn + Space bar		Selects the Show/Hide option for the onscreen keyboard. Hiding the onscreen keyboard increases the working area. Same as tapping on the keyboard icon.
Fn + Small Space	Shortcut key	Launches the Stowaway application for customizing keyboard options.
Fn + Today	Shortcut key	Launches QStart. Tap Start , then Help for a description of and information on how to use the QStart feature.

Diacritical Marks

To add diacritical marks, press the Alt key and the character listed in the table, let go of the keys and then type the letter you want to accent. For uppercase characters, hold down the Shift key while you type the letter you want to accent



NOTE: In the following table, “a” represents the letter you want to accent. For example, to type the umlaut ö in Köln, use the key combination Alt - : (colon) + o.

Mark	Key Sequence	Description
Á, á	Alt - ' + a, e, i, o, u, or y	Acute accent
Â, â	Alt - ^ + a, e, i, o, u, or y	Circumflex
Ä, ä	Alt - : + a, e, i, o, u, or y	Diaeresis/Umlaut
À, à	Alt - ` + a, e, i, o, or u	Grave accent
Ã, ã	Alt - ~ + o or n	Tilde
æ, œ	Alt - & + a or o	Latin ae/oe ligature
Ç, ç	Alt - , + c	Cedilla

Extended Characters

The following table lists the Fn key combinations for generating extended characters and punctuation marks.

Character	Key Sequence	Description
Ø	Fn + O	Uppercase nought
ø	Fn + o	Lowercase nought
¿	Fn + ?	Inverted down “?”
¡	Fn + !	Inverted down “!”
Æ	Fn + A	Uppercase AE ligature
æ	Fn + a	Lowercase ae ligature
•	Fn + w	Bullet (center dot)

Symbols

The following table lists the Fn key combinations for generating symbols.

Character	Key Sequence	Description
©	Fn + c	Copyright
®	Fn + r	Registered trademark
™	Fn + t	Trademark
°	Fn + d	Degree
μ	Fn + u	Micro

Character	Key Sequence	Description
±	Fn + +	Plus or minus
¶	Fn +]	Paragraph symbol
§	Fn + [Section
«	Fn + <	Guillemotleft
»	Fn + >	Guillemotright
@	Fn + q	At symbol
ß	Fn + s	Sharp “s” (lowercase)
¢	Fn + \$	Cents
€	Fn + e	Eurodollar
£	Fn + p	Pound sterling
¥	Fn + y	Japanese yen
₺	Fn + l	Lira
₣	Fn + f	French franc

Things to Remember

Hardware

- Typing with the Stowaway keyboard on your knee does not provide the same robust feel as typing on a flat, solid surface. If you set the keyboard on an uneven surface, it will bow slightly in the center. To stabilize the Stowaway keyboard, place it on a firm, flat object such as a book, or briefcase.

- Use your stylus for selecting list items and making menu selections.
- Use the stylus wells in the upper-right and -left corners of the Stowaway keyboard to keep your stylus within reach.
- To avoid possible hardware damage, make sure that you fully extend the docking mechanism and click the docking connector into place before attaching your pocket PC to the Stowaway keyboard.

Software

- The Tab key functions as a tab character when you type in text such as in Notes or Word, but will also move between fields.
- Inserting your pocket PC into the Stowaway keyboard before powering on your pocket PC ensures that the keyboard is recognized for immediate use.
- Key combination results are based on Pocket Word and Notepad. Other applications may not support the key combinations or may give different results.
- Plugging in the ActiveSync® cable can temporarily disable the Stowaway keyboard software. To enable the keyboard software, disconnect the ActiveSync® cable and turn your pocket PC off, then back on.

Comfortable Typing

Research suggests that physical discomfort and injury to nerves, tendons, and muscles may be related to repetitive motion, an improperly set up work area, incorrect body posture, and poor work habits.

To reduce the risk of injury, follow these precautions:

- Stand, stretch, and move around several times every hour.
- Switch hands while performing tasks. Use shortcut keys to move efficiently and avoid repetitive, awkward movements.

- Type gently and lightly.
- Relax your shoulders and keep your elbows at your sides. Adjust the keyboard's position so that you don't have to stretch to reach it.
- Adjust your position so that you don't have to bend your wrists to type; avoid placing your wrists on a sharp edge.

If you feel discomfort or numbness in your hands, wrists, arms, shoulders, neck, or back while typing, consult a qualified medical professional.

Customizing the Stowaway Portable Keyboard Features

After installing the Stowaway keyboard software on your pocket PC, you can customize its options through the Stowaway application.

Using the Stowaway Application

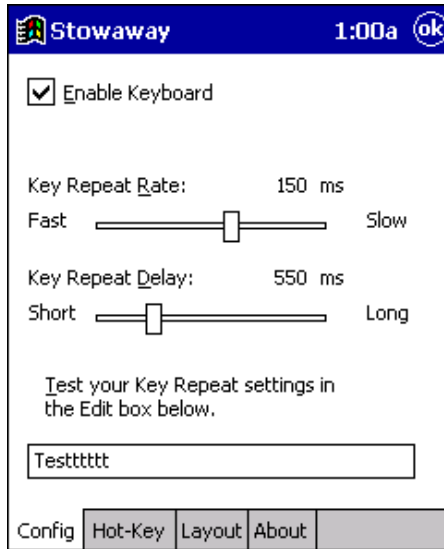
To access the Stowaway application, tap **Start**, then **Stowaway** on your pocket PC or press **Fn + Space** (small Space key) on the keyboard.

The available Stowaway application tabs are:

- **Config** Shows the Stowaway configuration options
- **Hot-Key** Lists the Fn 1 through 0 key assignments
- **Layout** Shows the language options (if available)
- **About** Shows the software name, version, and copyright information

Configuring Keyboard Settings

Open the Stowaway application, then tap the **Config** tab, located at the bottom of the screen, to adjust the following features (described overleaf):



Stowaway Config tab

After you set your preferences, close the window by pressing **Fn + Enter** on the keyboard or tapping **OK** on the pocket PC to save your changes.

Enable Keyboard

This option allows the keyboard to work properly. Disabling the keyboard suspends keyboard functions and frees memory resources for tasks that do not require the keyboard, such as the voice recorder.

To disable the keyboard, open the Stowaway application, and tap on the box next to Enable Keyboard so that the check mark disappears.

Key Repeat Rate

This option allows you to set the speed at which a letter, number or other character repeats when you press and hold a key.

Use your stylus to drag the marker arrow toward Fast to increase or Slow to decrease the repeat rate.

Key Repeat Delay

This option allows you to set the length of time before a letter, number or other character begins to repeat when you press and hold a key.

Use your stylus to drag the marker arrow toward Long to increase or Short to decrease the length of the delay.

Test Key Repeat

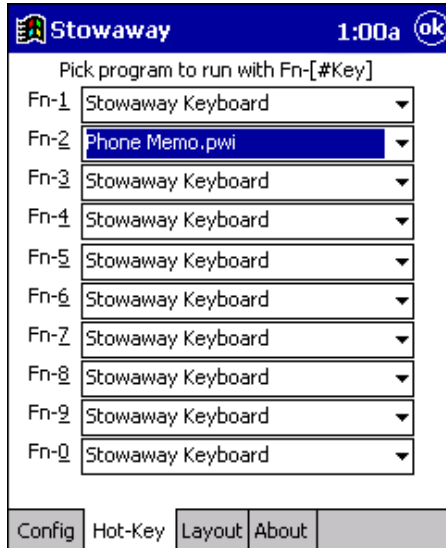
Test the repeat rate and delay by holding down a letter or number key on the Stowaway keyboard. The character appears according to the settings you have chosen. Change and test these settings until you achieve the desired outcome.

Assigning Hot-Keys

The Stowaway keyboard software provides ten user-definable hot-keys through the use of the Fn key plus the 1 through 0 keys across the top of the keyboard. You can assign these hot-keys to launch applications or open specific files.

To assign hot-keys to applications:

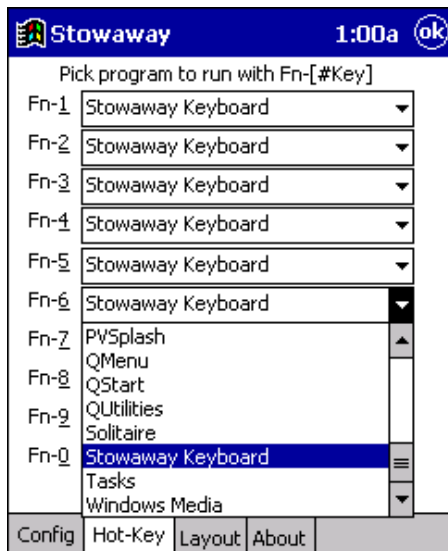
- 1 Open the Stowaway application, then tap the **Hot-Key** tab.



Stowaway Hot-Key tab

- 2 Choose the Fn + number combination you want to assign, then tap on the **drop-down menu arrow**.

An application list appears.



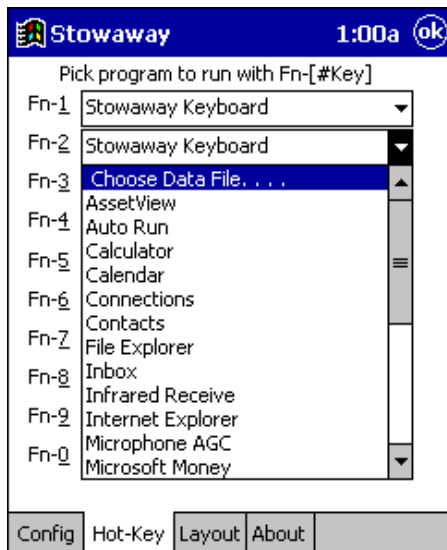
Fn + number assignment screen

- 3 Select the application you want to assign to the Fn + number combination.
- 4 Repeat steps 2 and 3 to assign hot-keys for launching other applications.
- 5 Close the window by pressing **Fn + Enter** on the keyboard or tapping **OK** on the pocket PC.

Your Fn + number assignments are saved automatically.

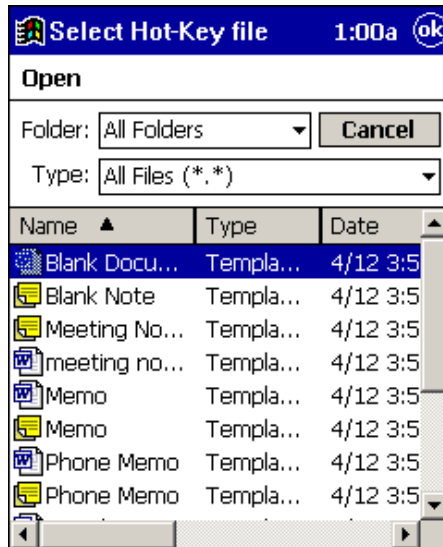
To assign an Fn key to open a specific file, such as a Word or Excel document:

- 1 From the Hot-Key tab, choose the Fn + number combination you want to assign, then tap on the **drop-down menu arrow**.
- 2 Tap **Choose Data File...** .



Fn + number data file list

A list of data files appears.



Select Hot-Key file screen

- 3 Tap on the specific file you want to assign to the Fn + number combination. The Stowaway Hot-Key tab screen appears.
 - 4 Repeat steps 1 through 3 to assign hot-keys to open other files.
 - 5 Close the Stowaway application by pressing **Fn + Enter** on the keyboard or tapping **OK** on the pocket PC.
- Your Fn + number assignments are saved automatically.

Viewing Layout Settings

The Layout tab in the Stowaway application allows you to view the keyboard layout language. Currently, the only available language is Standard US English. To access Layout, open the Stowaway application, then tap the **Layout** tab.

Accessing Help from the About Tab

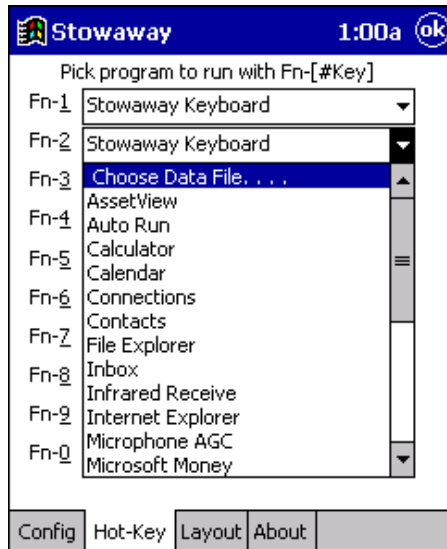
The About tab in the Stowaway application allows you to view the Stowaway keyboard software version, and copyright and trademark information. You can also access the Stowaway keyboard Help list.

To access About, open the Stowaway application, then tap the **About** tab. To access Stowaway keyboard Help, tap **Start** and then select **Help** from the drop-down menu.



Stowaway About tab

The Stowaway Help contents screen appears.



Stowaway Help contents screen

To view all of the Help topics for your pocket PC from the Stowaway Help file, tap **View** in the lower-left corner, and then tap **All Installed Help**.

You can also access the Stowaway Help file from the Programs window by tapping **Start**, then **Help**, and then **Stowaway**.

Troubleshooting

Frequently Asked Questions

What should I do when I type on the keyboard, and nothing happens?

- Check that your pocket PC is charged.
- Make sure that your pocket PC is properly connected to the Stowaway Portable Keyboard.
- Turn off your pocket PC, while it is attached to the keyboard, and then turn it back on.
- Confirm that the Stowaway keyboard software is enabled. See [“Configuring Keyboard Settings” on page 19](#).
- Use your stylus to access the Stowaway Help button from the Stowaway application. See [“Accessing Help from the About Tab” on page 25](#).
- Remove the keyboard software and then reinstall it. To do this:
 - 1 Tap **Start**, then select **Settings**.
 - 2 Tap on the **System** tab and then **Remove Programs**.
The Stowaway keyboard is listed in the Programs in Storage Memory list.
 - 3 Tap **Targus Stowaway**, then tap **Remove**.
A dialog box appears.
 - 4 Tap **Yes** to remove the keyboard software, or **No** to cancel the operation.
 - 5 Install the keyboard software, following the instructions in [“Installing the Targus Stowaway Keyboard Software” on page 4](#).

Why can't I synchronize my pocket PC when it is attached to the keyboard?

The Stowaway Portable Keyboard does not replace your pocket PC's cradle. To synchronize, remove your pocket PC from the Stowaway keyboard and insert it into the cradle. Then, synchronize as usual.

Can I use the stylus while connected to the keyboard?

Yes, you can use the stylus and the keyboard simultaneously. For added convenience, there are two stylus wells located in the top corners of the keyboard.

Please check our Web site at www.targus.com for more frequently asked questions, product information, and software updates.

Technical Support

In the unlikely event that you encounter a problem with your Targus accessory, please contact our technical support team at:

Email: techsupport@targus.com

Internet: <http://www.targus.com/support.asp>

Our knowledgeable staff is also available to answer your questions through one of the following telephone numbers.

North America

Monday through Friday, 8:00 a.m. (08:00) to 8:00 p.m. (20:00) Eastern time:

US & Canada: 800-283-6325

Europe

Belgium	+32 0 02-717-2451
Denmark	+45 0 35-25-8751
France	+33 0 1-64-53-9151
Germany	+49 0 21-16-579-1151
Italy	+39 0 24-827-1151
Netherlands	+31 0 53-484-9470
Spain	+34 0 91-745-6221
Sweden	+46 0 8-751-4058
Switzerland	+41 0 1-212-0007
United Kingdom	+44 0 20-7744-0330
Eastern Europe & others	+31 0 53-484-9479

Product Registration

For more efficient customer service and to activate the product's warranty, Targus recommends that you register your Targus accessory shortly after purchasing it.

To register your Targus accessory, go to:

<http://www.targus.com/registration.asp>

You will need to provide your full name, email address, phone number, and company information (if applicable).

Warranty

Targus warrants this product to be free from defects in materials and workmanship for one year. If your Targus accessory is found to be defective within that time, we will promptly repair or replace it. This warranty does not cover accidental damage, wear and tear, or consequential or incidental loss. Under no conditions is Targus liable for loss of, or damage to, a computer; nor

loss of, or damage to, programs, records, or data; nor any consequential or incidental damages, even if Targus has been informed of their possibility. This warranty does not affect your statutory rights.

Warranty Registration at:

<http://www.targus.com/registration.asp>

Regulatory Compliance

This device complies with Part 15 of the FCC Rules. Operation is subject to the following two conditions: (1) This device may not cause harmful interference, and (2) This device must accept any interference received, including interference that may cause undesired operation.

FCC Statement

Tested to Comply

This equipment has been tested and found to comply with the limits of a Class B digital device, pursuant to Part 15 of the FCC Rules. These limits are designed to provide reasonable protection against harmful interference in a residential installation. This equipment generates, uses, and can radiate radio frequency energy and if not installed and used in accordance with the instructions, may cause harmful interference to radio communications. However, there is no guarantee that interference will not occur in a particular installation.

If this equipment does cause harmful interference to radio or television reception, which can be determined by turning the equipment off and on, the user is encouraged to try to correct the interference by one or more of the following measures:

- Reorient or relocate the receiving antenna
- Increase the separation between the equipment and receiver
- Move the computer away from the receiver
- Connect the equipment into an outlet on a circuit different from that to which the receiver is connected.

Stowaway is a trademark of Think Outside, Inc. Microsoft and ActiveSync are registered trademarks of Microsoft Corporation. All other trademarks are the property of their respective owners.



TARGUS

Essential Accessories for Mobile Computing

Making Your Mobile Life Easier.

Visit our Web site at: www.targus.com

Features and specifications are subject to change without notice. © 2002 Targus Corp.

400-0075-001A

BRUSSELS

HANNOVER

BARCELONA

TOKYO

MILANO

AMSTERDAM

SINGAPORE