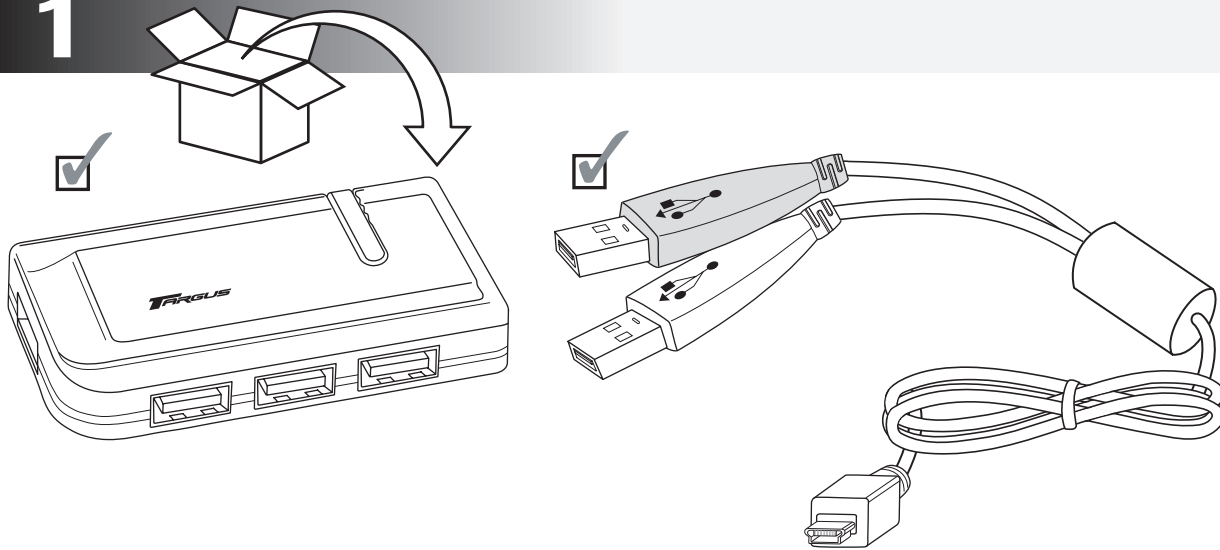


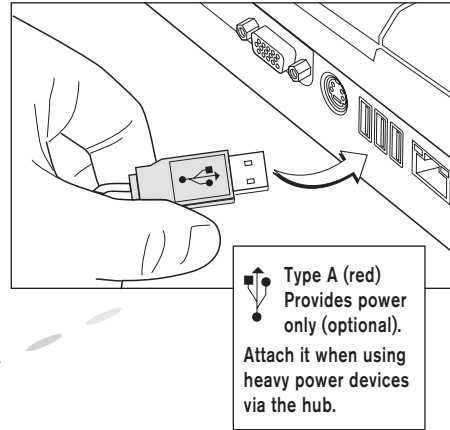
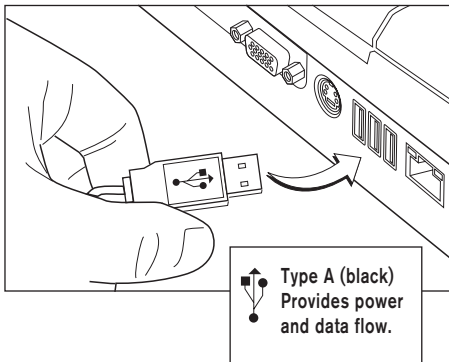
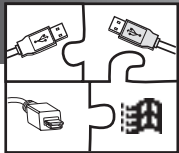
**1**



**Démarrage Rapide**

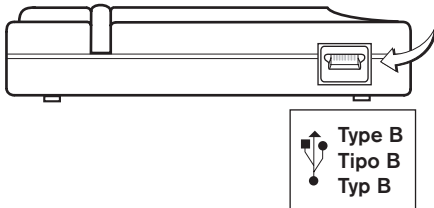
**Schneller Anfang**

**2**



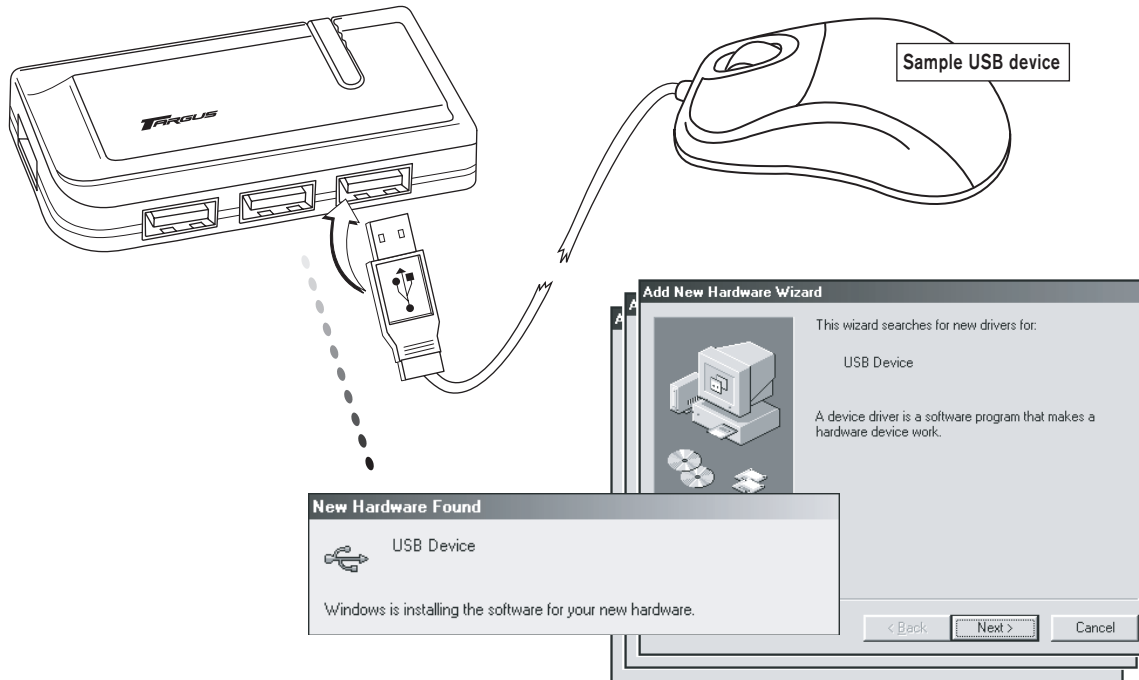
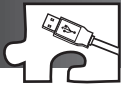
**Inizio Rapido**

**Comienzo Rápido**



**Início Rápido**

**3**



**Démarrage Rapide**

**Schneller Anfang**

**Snel Begin**

**Inizio Rapido**

**4**

[www.targus.com/support.asp](http://www.targus.com/support.asp)

**Technical Support**

For technical questions, please visit:

Internet: <http://www.targus.com/support.asp>

**Australia**

Internet : [www.targus.com.au](http://www.targus.com.au)

Email : [infoaust@targus.com](mailto:infoaust@targus.com)

Monday through Friday, 8:30 a.m. (08:30) to 5:30 p.m. (17:30)  
Eastern time: 1-800-641-645

**Canada**

Monday through Friday, 9:00 a.m. (09:00) to 5:00 p.m. (17:00)  
Eastern time: 888-827-4877

**Europe**

Belgium +32-(0) 02-717-2451

Denmark +45-35-25-8751

France +33-(0) 1-64-53-9151

Germany +49-(0) 21-16-579-1151

Italy +39-024-827-1151

Netherlands +31-(0) 2-0504-0671

Spain +34-(0) 91-745-6221

Sweden +46-(0) 8-751-4058

Switzerland +41-(0) 1-212-0007

United Kingdom +44-(0) 20-7744-0330

Eastern Europe & others +31-(0) 53-484-9479

**Warranty**

Targus warrants this product to be free from defects in materials and workmanship for one year. If your Targus accessory is found to be defective within that time, we will promptly repair or replace it. This warranty does not cover accidental damage, wear and tear, or consequential or incidental loss. Under no conditions is Targus liable for loss of, or damage to a computer; nor loss of, or damage to,

programs, records, or data; nor any consequential or incidental damages, even if Targus has been informed of their possibility. This warranty does not affect your statutory rights.

Warranty Registration at:

<http://www.targus.com/registration.asp>

**Regulatory Compliance**

This device complies with Part 15 of the FCC Rules. Operation is subject to the following two conditions: (1) This device may not cause harmful interference, and (2) This device must accept any interference received, including interference that may cause undesired operation.

**FCC Statement**

**Tested to Comply**

This equipment has been tested and found to comply with the limits of a Class B digital device, pursuant to Part 15 of the FCC Rules. These limits are designed to provide reasonable protection against harmful interference in a residential installation. This equipment generates, uses, and can radiate radio frequency energy and if not installed and used in accordance with the instructions, may cause harmful interference to radio communications. However, there is no guarantee that interference will not occur in a particular installation. If this equipment does cause harmful interference to radio or television reception, which can be determined by turning the equipment off and on, the user is encouraged to try to correct the interference by one or more of the following measures:

- Reorient or relocate the receiving antenna
- Increase the separation between the equipment and receiver
- Move the computer away from the receiver
- Connect the equipment into an outlet on a circuit different from that to which the receiver is connected.

**Comienzo Rápido**

**Inicio Rápido**